



ALBION PARK

SPEED PACING CAPITAL OF AUSTRALIA

AMY STREET, BREAKFAST CREEK

RACE BOOK

SATURDAY 24 APRIL, 1993

Race Meeting 1777



**CONRAD
JUPITERS**

GOLD COAST

OPERATED BY HILTON HOTELS



INTER DOMINION

• PACING CHAMPIONSHIP •

1993

Australasia's Greatest Harness Race
the Inter Dominion Pacing
Championship comes to Albion Park
Winner 1972 - Welcome Advice
Winner 1977 - Stanley Rio
Winner 1986 - Village Kid
Winner 1993 - ???

Bigger Than Ben Hur!

NOTICE

The Contents of this Book have been carefully compiled, and are believed to be correct, but the Committee will not hold itself responsible for any inaccuracy.

BETTING COMPLAINTS

Bookmakers must write the name of the horse and the amount of the bet on each ticket issued, otherwise in the case of dispute the decision may be given against them.

Every patron should see that the proper change and legible Betting Ticket or correct payout is received before leaving the Bookmaker, as subsequent claims may not be recognised.

In the event of a dispute or non-payment of a wager on presentation of the Betting Ticket to the Bookmaker, patrons are advised to lodge the Ticket with the Betting Supervisor not later than 30 minutes after the conclusion of the race in respect of which the ticket was issued. Such ticket shall be presented intact and in no way mutilated, otherwise the decision may be given against the person mutilating such Ticket.

NOTICE

The following regulations will be strictly enforced —

1. No person will be allowed on any pretence whatever to trespass on the course proper at any time.
2. Admission to the Paceway will be obtainable only by token.
3. Any person who shall commit any breach of the above regulations shall be liable to be summarily removed from the course by any of the Club's Officials.

By order of the Committee,

D.J. Raedler
Secretary/Manager

THE ALBION PARK HARNESS RACING CLUB

Chairman: K. BENGSTON, Esq.

| | |
|--------------------|---------------------|
| Deputy Chairman | Honorary Treasurer |
| R.J. LETTE, Esq. | P.J. BURGE, Esq. |
| M.F. AITKIN, Esq. | A.C. McGUCKIN, Esq. |
| D.J. BRENNAN, Esq. | A.J. PRICE, Esq. |
| K.W. SEYMOUR, Esq. | |

Secretary Manager: **DAMIAN RAEDLER, Esq.**

P.O. Box 296, Albion, 4010, Q.
Amy Street, Breakfast Creek, Brisbane, 4010, Q.
Telephone: (07) 262 2577 Fax: (07) 262 1885



MOBILE STARTS

A false start will be declared only when:

1. A horse breaks in the score-up causing another runner, or runners to break-up or be seriously inconvenienced.
2. A horse falls in the score-up.
3. If in the opinion of the starter, broken gear contributed to a horse breaking in the score-up.

BETTING DEDUCTIONS

In the event of a late scratching, the betting deductions will be according to the rules of the Racing and Betting Act.

A copy of the deductions is available from the first floor racing office.

SADDLE CLOTH COLOURS

| | | | |
|--------|-------------|---------|-------------|
| Race 1 | GREEN | Race 6 | CONRAD BLUE |
| Race 2 | BROWN | Race 7 | CONRAD BLUE |
| Race 3 | GOLD | Race 8 | LIGHT BLUE |
| Race 4 | RED | Race 9 | GREEN |
| Race 5 | CONRAD BLUE | Race 10 | BROWN |

**CHILDREN 14 YEARS AND UNDER ADMITTED
FREE IF ACCOMPANIED BY AN ADULT**

INTER DOMINION HARNESS RACING COUNCIL INC. 1993 GRAND COUNCIL

The Inter Dominion Championship was first conducted in 1936 in Perth and from its inception it was realised there was a need for a supervisory body to ensure that rules, policy and guidelines were uniformly interpreted from series to series.

The President of the Council in those days was the late J. P. Stratton who appointed the President of each State and Dominion controlling authority to the Grand Council. The duties of the Council are to supervise all matters pertaining to the Series and to finalise the Grand Final field.

The Grand Council for the 1993 Inter Dominion Championship comprises:

✓ DR. E. C. MANEA

President, Inter Dominion Harness Racing Council

✓ MR. K. BENGSTON

President, Albion Park Harness Racing Club

✓ MR. J. G. PHILLIPS

President, New Zealand Harness Racing Conference

✓ MR. C. B. KOEFOED

President, Aucland Trotting Club

✓ MR. P. ANDREWS

President, New Zealand Metropolitan Trotting Club

DR. F. FAY

Chairman, Queensland Harness Racing Board

MR. L. NICHOLL

President, New South Wales Harness Racing Club

✓ MR. E. MISSINGHAM

Board Member, Harness Racing Authority of New South Wales

✓ MR. T. J. WALSH

Chairman, Harness Racing Board Victoria

MR. D. COOPER

Chairman, Tasmanian Harness Racing Board

✓ MR. M. BOWMAN

Tasmanian Pacing Club

✓ MR. R. T. PRIOR

President, South Australian Harness Racing Club

✓ MR. W. A. HENDERSON

South Australian Harness Racing Board

✓ MR. J. F. HIGGINS

President, Western Australian Trotting Association

Inter Dominion Grand Circuit

1992

- Oct. 31 QUEENSLAND CHAMPIONSHIP \$100,000
(Albion Park) 1 Franco Tiger; 2 Impressionist NZ; 3 Harbor Glow
- Nov. 10 NEW ZEALAND CUP \$NZ325,000 (Addington)
1 Blossom Lady; 2 Giovanetto; 3 Christopher Vance NZ
- Nov. 14 AUSTRALIAN PACING CHAMPIONSHIP \$100,000
(Bankstown) 1 Franco Tiger; 2 Westburn Grant; 3 Halyer
- Nov. 27 MIRACLE MILE \$300,000 (Harold Park)
1 Franco Tiger; 2 Christopher Vance NZ; 3 Jack Morris NZ
- Dec. 12 M. H. TREUER MEMORIAL \$150,000 (Bankstown)
1 Jack Morris NZ; 2 Band Magic; 3 Christopher Vance NZ
- Dec. 28 AUCKLAND CUP \$NZ240,000 (Alexandra Park)
1 Master Musician; 2 Christopher Vance NZ; 3 The Bru Czar

1993

- Jan. 2 WESTERN AUSTRALIAN PACING CUP \$300,000
(Gloucester Park) 1 The Harlem Boy; 2 Jack Morris NZ; 3 Franco Tiger
- Jan. 2 TASMANIAN PACING CHAMPIONSHIP \$100,000
(Hobart) 1 Karalta Jet; 2 The Unicorn NZ; 3 Bowral Boy NZ
- Jan. 9 SOUTH AUSTRALIAN CUP \$80,000 (Globe Derby Park)
1 Franco Tiger; 2 Nicholas Branach; 3 Bonamax NZ
- Feb. 27 VICTORIA CUP \$200,000 (Moonee Valley)
1 Master Musician NZ; 2 Jack Morris NZ; 3 Blossom Lady NZ
- May 1 INTER DOMINION CHAMPIONSHIP GRAND FINAL \$400,000 (Albion Park)

Progressive Grand Circuit Point Score \$60,000

Win - 5 points; second - 2 points; third - 1 point

(Australian races only)

21 Franco Tiger; 10 Jack Morris NZ; 5 The Harlem Boy, Karalta Jet, Master Musician NZ; 3 Christopher Vance NZ; 2 Westburn Grant, Impressionist NZ, Band Magic, The Unicorn NZ, Nicholas Branach; 1 Halyer, Harbor Glow, Bowral Boy NZ, Bonamax NZ, Blossom Lady NZ.

Grand Circuit Insured Bonus Scheme

(For all races)

5 races \$150,000 including Inter Dominion Championship \$200,000
6 races \$200,000 including Inter Dominion Championship \$250,000
7 races \$250,000 including Inter Dominion Championship \$400,000
8 races including Inter Dominion Championship \$500,000

INTERDOMINION PACING CHAMPIONSHIP POINTS SYSTEM

- (a) Points shall be awarded to each horse actually starting and finishing a division of the Qualifying Heats on the basis that the winner of a division of the Qualifying Heats will receive in points, the equivalent of the number of horses previously selected by the Albion Park Harness Racing Club as the maximum number of horses to compete in each division of the Qualifying Heats. The second horses in each division of the Qualifying Heats will receive the next lower number in points and the third horses will receive the next lower number with each horse finishing thereafter receiving in order one lower number in points than the preceding horse until the last horse finishing in a maximum field will receive one (1) point.
- (b) The winner of each division of the Qualifying Heats will receive four (4) bonus points to be added to the points already earned for that race. The second and third horse in each division of the Qualifying Heats will receive two (2) and one (1) bonus points respectively to be added to the points already earned for that race.
- (c) There are no points allocated for the fastest time.
- (d) A horse that is scratched from a division of the Qualifying Heats or a horse that does not complete the race will not be allocated any points for the division of that Qualifying Heat.
- (e) In the event of a scratching or a horse not completing the course, points will be allocated as before with the winner and other horses finishing the race entitled to receive that maximum number of points as if a full field had competed and finished in the course in that particular race.
- (f) In the event of a dead heat, all points of the horses dead heating shall be added together and equally divided.
- (g) The Judge shall place all horses in a race according to the order in which their noses reached the winning post.
- (h) In each Qualifying Heat the original number of maximum points shall be allocated irrespective of the actual number of starters and irrespective of the variation of the number of divisions of Qualifying Heats on each night of racing.

INTER DOMINION PACING CHAMPIONSHIP GRAND FINAL FIELD

- (a) The twelve (12) horses which gain the greatest aggregate of points shall be eligible to start in the Grand Final, but should circumstances warrant such a course of action, the Grand Council of the Inter Dominion Harness Racing Council shall have the power to increase the number of starters above the designated number and to select additional starters.
- (b) In the event of two or more horses each scoring equally the minimum number of points entitling them to be eligible for the Grand Final and thereby producing a field exceeding the number designated by the Albion Park Harness Racing Club then the Grand Council shall decide in its discretion which of the horses with equal points shall start in the Grand Final.
- (c) The Championship Program Committee shall be the sole judge of which horses are entitled to start in the Consolation Race.

1993 CONRAD JUPITERS INTER DOMINION PACING CHAMPIONSHIP Timetable

Saturday 24 April

| | |
|-----------------|--|
| 5.58 pm | MARSHALL DOBSON TO INTRODUCE FIESTA TROPICALE |
| 6.00 pm | FIESTA TROPICALE |
| 6.30 pm | PACERS WARM UP |
| 6.40 pm | RACE 1 |
| 6.45 pm | FIESTA TROPICALE |
| 7.00 pm | PACERS WARM UP |
| 7.10 pm | RACE 2 |
| 7.15 pm | FIESTA TROPICALE |
| 7.30 pm | PACERS WARM UP |
| 7.40 pm | RACE 3 |
| 7.45 pm | PACING PAIRS RECORD ATTEMPT |
| 8.00 pm | PACERS WARM UP |
| 8.10 pm | RACE 4 |
| 8.15 pm | FIESTA TROPICALE |
| 8.30 pm | PACERS WARM UP |
| 8.40 pm | RACE 5 — Heat 7 |
| 8.45 pm | FIESTA TROPICALE |
| 9.00 pm | PACERS WARM UP |
| 9.10 pm | RACE 6 — Heat 8 |
| 9.15 pm | PACERS UNDER SADDLE — Final |
| 9.30 pm | PACERS WARM UP |
| 9.40 pm | RACE 7 — Heat 9 |
| 9.45 pm | HOT-TO-TROT |
| 10.00 pm | PACERS WARM UP |
| 10.10 pm | RACE 8 |
| 10.15 pm | FIESTA TROPICALE |
| 10.30 pm | PACERS WARM UP |
| 10.40 pm | RACE 9 |
| 10.45 pm | FIESTA TROPICALE |
| 11.00 pm | PACERS WARM UP |
| 11.10 pm | RACE 10 |

TONIGHT'S RUNNERS

| Stall No. | Race No. | Stall No. | Race No. | Stall No. | Race No. |
|-----------|----------------------|-----------|----------|--------------------|----------|
| 48 | Aces To Spare | 10 | 46 | Henry Charles | 4 |
| 83 | Admiral Chimes NZ | 7 | 68 | High Trust | 3 |
| 91 | Alba Toff NZ | 10 | 28 | Hilarion Star | 5 |
| 63 | Almost An Angel | 5 | 77 | Hilarious Gent | 5 |
| 69 | Another Leader | 4 | 86 | Hip Pocket | 1 |
| 111 | Anvil Lad NZ | 7 | 3 | Impressionist NZ | 5 |
| 99 | Arafura NZ | 8 | 84 | Insutchu NZ | 6 |
| SCR | Atomic View | 10 | 12 | Island Byrd | 3 |
| 117 | Band Magic | 7 | 114 | Jack Morris NZ | 5 |
| 32 | Beaus Dream | 9 | 43 | Jay Jays Rebel | 8 |
| 47 | Blazing In | 8 | 17 | John Owen | 6 |
| 15 | Blossom Lady NZ | 6 | 61 | Junes Babe | 9 |
| 20 | Blue Balero | 1 | 62 | Just Able | 3 |
| 55 | Borama Keg | 1 | 60 | Just Laughing | 1 |
| 1 | Bowral Boy NZ | 7 | 70 | Just Try Him | 9 |
| 49 | Canny Berry NZ | 4 | 112 | Just Vindicate | 2 |
| 88 | Captain Lee NZ | 6 | 18 | Kabelha Lass | 10 |
| 35 | Celebration Miss | 8 | 21 | Kellys Dream | 2 |
| 36 | Chester Light | 2 | 110 | Kid Gallahad | 2 |
| 72 | Chippengale | 4 | 50 | Kilbank Craig NZ | 10 |
| 11 | Chokin NZ | 6 | 118 | Kimbolton Jane | 10 |
| 8 | Christopher Vance NZ | 5 | 89 | Lady Atalanta | 2 |
| 74 | Classic Alba NZ | 5 | 44 | Land of Giants | 9 |
| 7 | Coco Ridge | 9 | 45 | Land Profit | 3 |
| 81 | Dark Paul | 7 | 80 | Level Advice | 5 |
| SCR | Day And Knight NZ | 9 | 24 | Long Fella NZ | 4 |
| 22 | Decimator | 2 | 37 | Looney Tune | 3 |
| 2 | Defoe NZ | 6 | 14 | Lord Carrington | 10 |
| 54 | Derringer | 9 | 5 | Lord Muckalee | 6 |
| 65 | Dixieland Jazz | 10 | 76 | Lots Afellas NZ | 10 |
| 73 | Down Hill | 10 | 33 | Lucky Bye Able | 3 |
| 109 | Eastern Hanover | 8 | 94 | Maggie Majette | 1 |
| 25 | Fine Time | 8 | 38 | Mai Ling | 9 |
| 85 | Franco Glen | 5 | 59 | Maker Fuse | 6 |
| 27 | Franco Tiger | 7 | 42 | Makin It Easy | 9 |
| 19 | French Lace | 9 | 4 | Master Musician NZ | 7 |
| 75 | Furys Fineto | 3 | 87 | Motoring Matt | 10 |
| 13 | Gilt Dragon | 2 | 26 | Our Curt Hanover | 10 |
| 41 | Glen Warrie | 3 | 30 | Panama | 1 |
| 79 | Pappy McCoy | 6 | 57 | Paragon Pete | 4 |
| 6 | Popular Knight | 3 | 64 | Red Chip | 6 |
| 113 | Prince Of Hanema | 3 | 71 | Red Hills | 4 |
| 51 | Rustic Lad NZ | 5 | 58 | Shes Blushing | 9 |
| 9 | Sogo NZ | 5 | 9 | Son Of Glory | 3 |
| 100 | Sovereign Venture | 3 | 96 | Stormy Cove | 1 |
| 16 | Strata | 9 | 119 | Sunasalina | 2 |
| 52 | Sunset Liquer | 8 | 56 | Tarpot Chris | 3 |
| 93 | The Baton | 1 | 67 | The Emcee | 5 |
| 92 | The Minstrel | 1 | 29 | The Unicorn NZ | 6 |
| 34 | Tiara Nugget | 2 | 90 | Top Lover NZ | 8 |
| 116 | Toura | 10 | 66 | Transpreneur | 3 |
| 98 | Trix Galore NZ | 2 | 10 | Two Under | 7 |
| 31 | Union Monarch | 4 | 115 | Valley Champ | 7 |
| 23 | Victor Boy | 4 | SCR | Valro Idol | 8 |
| 82 | Warrior Khan | 6 | SCR | Vanassic | 9 |
| 78 | Weona Warrior | 7 | 97 | Vanston Adios | 10 |
| 53 | Westburn Grant | 7 | 23 | Warrior Khan | 6 |
| 95 | Whizdom Tooth | 8 | 78 | Weona Warrior | 7 |
| 40 | Wig And Gown NZ | 4 | 53 | Westburn Grant | 7 |

VIESTA TROPICALE

LATIN AMERICAN - CARIBBEAN MUSIC
REGGAE AND AFRO RHYTHMS

CARNIVALE ROVING BAND

Exploding on to the scene with horns and drums blasting; dressed in Sargeant Pepper's Marching Band style costumes, they will transport you to a BRAZILIAN CARNIVALE with a beat you can't resist.

You will become part of the show as you dance and sing to Brazil, Quando Quando, Copa Cabana, so put on your dancing shoes, because you'll be a movin' and a groovin'.

We achieve a full stage band sound roving, by using piano and bass guitar along with the horns and drums. Our colourful magic music machine on tricycle wheels and powered by inbuilt batteries is towed and steered by our bass guitarist whilst the pianist controls the microphones on the inbuilt eight channel PA mixing unit. The unit fits through a normal doorway and from its front loaded speakers emits up to 120 watts of sound power.



P.S. Don't forget your cowbells and maracas!

*. . . . a message from the Chairman of Albion
Park Harness Racing Club*

*and the Chairman of the Queensland Harness
Racing Board*

*Welcome to all visitors from Australia and New
Zealand for the 1993 Conrad Jupiters Inter
Dominion Pacing Championship. We trust that
you enjoy yourselves and back plenty of
winners.*

*Albion Park extends its sincere appreciation to
Conrad Jupiters for their invaluable
sponsorship of the Series. We are delighted
such a high-profile organisation has given its
name and financial backing to this prestigious
Series.*

*And a special mention of good luck to all
competitors in the 1993 Series as achieving a
start in the Inter Dominion is an honour in
itself.*

*Once again, a special thank you to you — the
public — because without your attendance, the
1993 Conrad Jupiters Inter Dominion would not
be the wonderful event it will most certainly be.*

*Kevin Bengston
Chairman
Albion Park Harness
Racing Club*

*Fabian Fay
Chairman
Queensland Harness
Racing Board*

OFFICIAL PRODUCT SPONSOR FOR THE 1993 INTERDOMINION SERIES IN ALBION PARK



International Animal Health Products

MANUFACTURERS AND MARKETERS OF HARDOCK'S & SOUTER'S PRODUCTS

FOR PRODUCT INFORMATION AND DATA SHEETS
TELEPHONE: (02) 604 9922 FACSIMILE: (02) 604 3403

RACE

1

6.40 p.m. MOBILE START 1609m

INTERNATIONAL ANIMAL HEALTH PRODUCTS 2YO STAKES

Of \$4,510 — winner \$2630 plus rug; second \$800; third \$450; fourth \$250; fifth \$120; sixth to last \$52. For two year old pacers * Preferential Draw on Metro Age Assessment. Class record: Son Of Otara 1:57.2 — 27/4/91.

NOTE * ALL RUNNERS ACROSS FRONT LINE

SELECTIONS: STORMY COVE 1, Maggie Majette 2, Borama Keg 3.

SADDLE CLOTHS — GREEN

1 THE MINSTERAL Ft

JIM RETCHLESS

M Schmidt, K D Schmidt
Brown f 2yrs TS:1005 LT:\$6450

Trainer:D.Schmidt

Harbor Skipper/Alison Way
PURPLE & GOLD STRIPES, PURPLE SLEEVES

3rd (FT1) 1740m MS BATHURST 27 MAR 5 DIVA NZ (2.04.6) (3M,8M)
2nd (FT2) 1830m MS ORANGE 02 APR 4 BRITTANY (2.04.9) (3M,HD)
3rd (FT5) 1609m MS ALBION PK 10 APR 10/1 PANAMA (2.00.6) (2M,19M)

• THE MINSTERAL: Maiden, placed 5 of 10; draw helps.

2 THE BATON Ft

KERRY SCHMIDT

M Schmidt
Bay/brown g 2yrs TS:1111 LT:\$4800

Trainer:D.Schmidt

Big Band Sound/Pleasant Ally

PURPLE & GOLD STRIPES, PURPLE SLEEVES
4th (FT10) 1740m MS BATHURST 24 MAR 25 ROYAL CHEF (2.01.1) (24M)
6th (FT8) 1740m MS BATHURST 27 MAR 7 CALDERWOOD PRINCE (2.02.5) (4M)
WON (FT5) 1609m MS GOLD COAST 13 APR 5/4 (2.02.2) (3M,10M)

• THE BATON: Unplaced 7 (Qld., NSW) before GC win; harder here.

3 BORAMA KEG Ft

DAMIEN STAINKEY

R Teys, K W Burns, R Despot, M Poloni, G R J Kennedy
Bay/brown g 2yrs LT:\$0

Trainer:B.J.Stainkey

Land Grant/Sly Isa
BLUE, RED CROSSED SASHES
First Start

• BORAMA KEG: First starter, shown some trial promise.

4 BLUE BALERO Ft

BILL GARAY

W Garay
Bay c 2yrs TS:400 LT:\$211

Trainer:W.Garay

Caesar Blue Chip/Tiffany Storm
RED, BLACK SLEEVES

7th (FT4) 1609m MS ALBION PK 06 MAR 7/1 NOTWITHSTANDING (2.00.6) (40.5M)
5th (FT3) 1609m MS ALBION PK 27 MAR 16/1 PANAMA (2.03.4) (11M)
7th (FT6) 1609m MS ALBION PK 03 APR 40/1 ANOTHER DEE (2.00.8) (43M)

10 • BLUE BALERO: Failed all 4 AP runs; can't have.

1

5

①

STORMY COVE Ft

TONY HARDING

J C Graham, G J Graham
Chestnut c 2yrs TS:312 LT:\$14945

Trainer:A.W.Harding

Land Grant/Covelle

BLUE, BLACK HOOPED SLEEVES

WON (FT3) 1609m MS ALBION PK 30 JAN 7/2 (NTT) (36M, LG HD)
2nd (FT3) 1609m MS ALBION PK 27 FEB 4/6 JEREMY LEE (1.59.9) (LG HD, 8M)
2nd (FT8) 1609m MS ALBION PK 06 MAR 11/4 SON OF FORTUNE (1.58.7) (NK, 1/2 NK)

• STORMY COVE: Two minute juvenile; likely leader, go close.

6

MAGGIE MAJETTE Ft

WAYNE CAMPBELL

S H Skeates, J M Althaus
Bay f 2yrs TS:622 LT:\$9205

Trainer:W.T.Campbell

Majestic Skipper/Dojea Country
GOLD, BROWN DIAMOND

2nd (FT2) 1800m MS REDCLIFFE 19 FEB 6/4 LOCHEND LUCY (2.03.4) (2M,12M)
WON (FT1) 1609m MS ALBION PK 27 FEB 11/4 (2.00.9) (2M,10M)
5th (FT8) 1609m MS ALBION PK 06 MAR 8/1 MISS PAULA (2.00.4) (15M)

• MAGGIE MAJETTE: Handy filly, won 2 of 6. Place chance.

7

HIP POCKET Ft

PETER GREIG

D W Petty
Bay c 2yrs TS:400 LT:\$155

Trainer:D.W.Petty

Jeremy Laurence/Works For Me

GREEN, ORANGE & GOLD STRIPES

5th (FT8) 1609m MS ALBION PK 30 JAN 16/1 STORMY COVE (NTT) (45M)
5th (FT9) 1800m MS REDCLIFFE 05 FEB 16/1 JAIME LAND (2.04.7) (20M)
4th (FT1) 1695m SS ROCKLEA 13 FEB 7/4 MISS JUELLET (2.09.8) (28M)

• HIP POCKET: Unplaced all 4 runs and drawn out; tested.

8

JUST LAUGHING Ft

GRANT DIXON

J L Fyfe

Brown/black g 2yrs TS:1106 LT:\$4514

Trainer:W.F.Dixon

Land Grant/Silver Anniversary

BLACK & WHITE CHECKS, WHITE SLEEVES

2nd (FT3) 1740m MS BATHURST 20 MAR 8 ROTHERWOOD ANYTIME (2.02.0) (NK,5M)
3rd (FT4) 1740m MS BATHURST 24 MAR 8 HAND OF FATE (2.02.8) (7M,HD)
4th (FT1) 1740m MS BATHURST 27 MAR 34 CALDERWOOD PRINCE (2.02.5) (3M)

• JUST LAUGHING: Raced OK Bathurst but poorly drawn.

9

PANAMA Ft

ROBERT MARTIN

L A Wall

Bay g 2yrs TS:722 LT:\$6565

Trainer:K.Brooks

Land Grant/Miss Panama

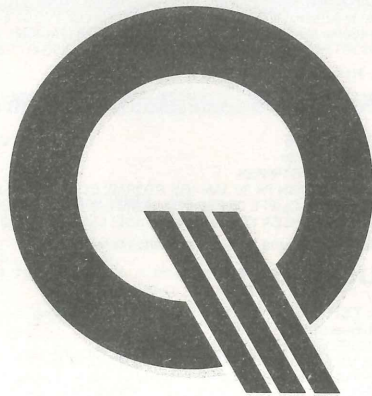
BLACK, GOLD SPOTS & SLEEVES

WON (FT6) 1609m MS ALBION PK 27 MAR 3/1 (2.03.4) (NS.5.5M)
2nd (FT7) 1609m MS ALBION PK 03 APR 11/2 ANOTHER DEE (2.00.8) (4.5M,13M)
WON (FT2) 1609m MS ALBION PK 10 APR 7/4 (2.00.6) (2M,19M)

• PANAMA: In-form here but not as well drawn now.

1st 2nd 3rd 4th Time Margins 11

Queensland
Events Corporation -
putting Queensland
in the winners' circle
with world class events.



**QUEENSLAND
EVENTS
CORPORATION**

Level 30, Riverside Centre,
123 Eagle Street, Brisbane Q. 4000
Phone (07) 831 1655 Fax (07) 831 1928

**Ask for our
Calendar of 101 Big Events
and you'll see why Queensland is
becoming the Big Event State of Australia.**

**Switzerland
Insurance
Australia
Limited . . .**

. . . providing
insurance
services to
Corporate Australia
for over
40 years.

SWITZERLAND
INSURANCE

241 Adelaide Street Brisbane 4000
Telephone 221 5044 Fax 229 8443

RACE

7.10 p.m. MOBILE START 2100m

2

SWITZERLAND INSURANCE STAKES

Of \$3,864 — winner \$2260; second \$690; third \$340; fourth \$130; fifth \$80; sixth to last \$52. Eligible for Qualifying Stakes 'B' * Non Preferential Draw. Class record: Bavarian Band 2:37.0 (2:0.2) — 23/11/91.

SELECTIONS: KID GALLAHAD 1, Lady Atalanta 2, Trix Galore 3.

SADDLE CLOTHS — BROWN

2.396
2.01.8

1 KELLYS DREAM Ft

COLIN MCDUGALL

V J Kopelke
Chestnut m 7yrs **TS:1804 LS:3025 LT:\$12138**
Broadcaster B Calvert Hanover
WHITE, BLACK BRACES & SLEEVES
4th (155) 2240m SS ROCKLEA 20 MAR 12/1 AIRPORT BOY (2.06.9) (14M)
7th (208) 2240m SS ROCKLEA 27 MAR 25/1 VANCE'S STAR NZ (2.08.0) (22.5M)
9th (FT10) 1935m SS ROCKLEA 10 APR 14/1 HOUSE OF POWER (2.08.6) (31.5M)

Trainer: C.H. McDougall

• **KELLYS DREAM:** Unplaced last 3 easier R'lea; last won May '92.

2 SUNASALINA Ft

TRACEY HOLBECK

S G Williams, T E Holbeck
Bay g 7yrs **TS:1621 LS:51310 LT:\$10087**
Koarakau Salina
PINK, PURPLE V, GREY STAR, PURPLE & GREY HOOPED SLEEVES
8th (FT6) 2100m MS ALBION PK 10 APR 6/1 THE ABSOLUTE NZ (2.02.5) (10.5M)
10th (FT3) 2600m SS ALBION PK 17 APR 50/1 MIGHTY MOSTEST NZ (2.05.2) (37M)
9th (FT8) 2100m MS ALBION PK 21 APR 12/1 STAR CONTENDER (2.02.3) (DIST)

Trainer: T.E. Holbeck

• **SUNASALINA:** Hasn't fired AP; broke in running Wednesday.

①

3 KID GALLAHAD Ft

BRETT TOWNS

M T Fish, C D H Wallace
Bay h 4yrs **TS:1413 LS:1767 LT:\$35652**
Gramatan Shonahan
BROWN, WHITE SASH & CAP
8th (FT10) 1609m MS ALBION PK 03 APR 50/1 SILAS MARINER (1.57.7) (30M)
3rd (FT6) 2060m MS TOOWOOMBA 08 APR 9/2 DRAGON LORD (2.03.9) (7M, 10M)
5th (FT8) 1609m MS TOOWOOMBA 15 APR 4/1 EASTERN HANOVER (2.05.0) (4M)

Trainer: M.A. Towns

• **KID GALLAHAD:** Beat Valro Idol 4 runs ago; suited here.

4 DECIMATOR Ft

ALAN DONOHOE

R H Hubbard
Bay g 9yrs **TS:1315 LS:371018LT:\$31538**
Timely Napoleon Glenda's Star
BLACK, RED V & STRIPED SLEEVES
7th (FT1) 2100m MS ALBION PK 10 APR 9/2 THE ABSOLUTE NZ (2.02.5) (10M)
4th (FT9) 2100m MS REDCLIFFE 16 APR 8/1 PRINCE OF HANEMA (2.03.4) (16M)
5th (FT7) 2100m MS ALBION PK 21 APR 5/1 STAR CONTENDER (2.02.3) (10.5M)

Trainer: S. Hunter

14 • **DECIMATOR:** Several chances, yet won, since came from NQ.

2

5 TRIX GALORE NZ Ft

JOHN LIVINGSTONE

P T Cappetti
Bay g 6yrs **TS:1843 LS:2237 LT:\$29189**
Niatix Favola
RED, BLACK STARS
6th (FT4) 2030m MS TWEED HDS 31 MAR 25/1 MASTER PAULSBORO (2.04.3) (15.5M)
9th (FT2) 2400m MS TWEED HDS 14 APR 25/1 KING LEO (2.02.8) (DIST)
3rd (FT8) 2030m MS TWEED HDS 21 APR 20/1 LAND PROFIT (2.00.3) (HD, 5M)

Trainer: J.A. Livingstone

• **TRIX GALORE:** Stayer, unplaced past 5 harder races; improve now.

6 CHESTER LIGHT Ft

GORDON MCCRAE

M D Stevenson
Chestnut h 4yrs **TS:1743 LS:33811 LT:\$28901**
Paleface King Penny Luck
BLACK & WHITE CHECKS, BLACK SLEEVES & CAP
5th (FT6) 1695m SS ROCKLEA 27 MAR 3/1 ZIPPY TAX (2.07.3) (14M)
10th (FT6) 2480m SS ROCKLEA 03 APR 3/1 THE EMCÉE (2.06.6) (DIST)
7th (FT2) 2100m MS ALBION PK 17 APR 125/1 FURYS FINETO (2.01.7) (42.5M)

Trainer: R.G. Westaway

• **CHESTER LIGHT:** Well beaten last week; best from stands.

7 JUST VINDICATE Ft

BOB SHAW

R W Elliott, H R Elliott
Brown g 7yrs **TS:2113 LS:2046 LT:\$32023**
Vance Hanover Elisas Joy
11th (FT2) 2100m MS IPSWICH 22 MAR 9/2 WHITE LINE KING (2.01.8) (32M)
5th (FT1) 2609m MS GOLD COAST 06 APR 6/1 MY REALITY NZ (2.05.0) (14.5M)
7th (FT8) 1609m MS GOLD COAST 20 APR 20/1 LAND OF RENO (1.58.8) (22M)

Trainer: R.J. Shaw

• **JUST VINDICATE:** Solid chance on best Vic form; average lately.

8 GILT DRAGON Ft

RICKY GORDON

R J Gordon
Bay g 8yrs **TS:1402 LS:2419 LT:\$29482**
Adios Vic Tiger Maid
LIGHT BLUE, DARK BLUE DIAMONDS
8th (FT9) 2100m MS ALBION PK 03 APR 10/1 HIGH TRUST (2.03.0) (12.5M)
3rd (FT2) 2100m MS ALBION PK 10 APR 11/2 THE ABSOLUTE NZ (2.02.5) (3M, 4.5M)
11th (FT1) 2100m MS ALBION PK 17 APR 10/1 SON OF GLORY (2.02.5) (DIST)

Trainer: R.J. Gordon

• **GILT DRAGON:** Tough alley; badly checked last run; place.

9 LADY ATALANTA Ft

CHARLIE CINI

C Watts
Bay m 6yrs **TS:43013 LS:3427 LT:\$29174**
Harbor Skipper Karamea Interlude
BLACK, RED MALTESE CROSS, WHITE SLEEVES
3rd (FT6) 2609m MS GOLD COAST 06 APR 11/2 MY REALITY NZ (2.05.0) (3M, 2M)
5th (FT10) 1509m MS ALBION PK 10 APR 20/1 MANGO GIRL (1.59.5) (8M)
2nd (FT1) 2100m MS ALBION PK 21 APR 8/1 VALRO IDOL (2.03.0) (5M, 4M)

Trainer: S.J. Cini

• **LADY ATALANTA:** Not well drawn but strong chance in weak race.

10 TIARA NUGGET Ft

NORM COPELAND

W C Ryan
Brown g 6yrs **TS:2401 LS:900 LT:\$7635**
Monarch Hanover Tiara Humor
DARK BLUE & ORANGE CHECKS, ORANGE SLEEVES, DARK BLUE CAP
4th (FT2) 2100m MS ALBION PK 27 MAR 25/1 QUISQUILLAS (2.01.8) (8M)
10th (FT11) 2100m MS ALBION PK 03 APR 33/1 HIGH TRUST (2.03.0) (15M)
6th (FT11) 2100m MS ALBION PK 17 APR 66/1 SON OF GLORY (2.02.5) (28M)

Trainer: N.W. Copeland

• **TIARA NUGGET:** Had too many AP chances without winning.

1st 2nd 3rd 4th Time Margins 15

Lucky Colours

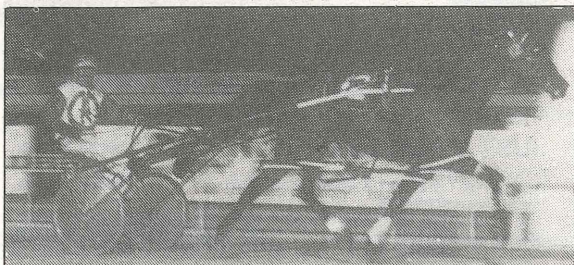
Makers of designer driving colours with cuffs and bands; embroidery and piping for the total look.

Also drivers pants and wet weather colours are a speciality and are just tailored for your needs.

For enquiries or bookings phone Barbara McDonald on (07) 268 7704 or by mail to Lot 16, Davison Road, SAMFORD. QLD 4520

Barbara will also have a stand at the Albion Park Raceway during the Interdominion series.

So for that special something with a winning edge order LUCKY COLOURS



Grand circuit champion Franco Tiger is powered by Lucky Colours.



**SPECIALISTS IN MANUFACTURING
AND REPAIRS FOR
HEAVY EARTHMOVER WHEELS
AND RIMS**

**37 SMALLWOOD STREET, UNDERWOOD
Ph: 341 7144 Fax: 341 2558**

RACE

3

7.40 p.m. MOBILE START 2100m

WHEEL & RIMS ENGINEERING STAKES

Of \$5,114 — winner \$2980; second \$900; third \$500; fourth \$250; fifth \$120; sixth to last \$52. For pacers assessed Q1 only * Class record: Tasko NZ 2:36.4 — (1:59.9) 4/7/92 & Shuttle Drive 2:36.4 (1:59.9) — 19/12/92.

TAB EXTRA DOUBLE (1st LEG)

SELECTIONS: FURYS FINETO 1, Prince Of Hanema 2, Son Of Glory 3.

SADDLE CLOTHS — GOLD

1 LOONEY TUNE Ft BRAD MCDUGALL

M J Real
Black h 8yrs TS:3916 LS:3025 LT:\$20932

Trainer: M.J. Real

Meadow Looneylina Volo

PINK, GREEN SPOTS, ORANGE SLEEVES

8th (FT2) 2100m MS ALBION PK 10 APR 80/1 VANSTON LORD (2.02.3) (24M)

3rd (FT2) 1609m MS TOOWOOMBA 15 APR 4/1 TRUSTY FRED (2.05.1) (6M.8M)

6th (FT10) 1609m MS ALBION PK 17 APR 66/1 KILBANK CRAIG NZ (2.00.8) (22M)

• LOONEY TUNE: Well drawn but AP form average.

2 TARPOT CHRIS Ft RAY REID

W J Rath, C W Rath
Brown g 9yrs TS:41110 LS:5058 LT:\$40450

Trainer: R.A. Reid

Tarport Bill Monarch Princess

BROWN, WHITE MALTESE CROSS, RED ARMBANDS

4th (FT5) 2100m MS GOLD COAST 13 APR 20/1 FINE TIME (2.02.0) (13.5M)

5th (FT1) 1609m MS ALBION PK 17 APR 50/1 KILBANK CRAIG NZ (2.00.8) (15M)

3rd (FT6) 2100m MS ALBION PK 21 APR 33/1 SON OF GLORY (2.02.5) (HD,SH,NK)

• TARPOT CHRIS: Rough place chance on AP 3rd Wednesday.

3 POPULAR KNIGHT Ft JEFF LANGDON

J P Langdon
Bay h 5yrs TS:2918 LS:4573 LT:\$15550

Trainer: J.P. Langdon

Fast Knight Stuarts Choice

GREEN, RED DIAMOND, RED HALF SLEEVES

3rd (FT2) 2100m MS ALBION PK 27 MAR 9/1 IDEAL TEL (2.01.0) (NK,5.5M)

3rd (FT10) 2100m MS ALBION PK 10 APR 40/1 VANSTON LORD (2.02.3) (13M,1/2 HD)

9th (FT2) 1609m MS ALBION PK 17 APR 10/1 KILBANK CRAIG NZ (2.00.8) (28.5M)

• POPULAR KNIGHT: Unsuit last run, place chance now.

4 GLEN WARRIE Ft NATHAN POSTLETHWAITE

R K Pryor, R R Johnson
Chestnut g 5yrs TS:2513 LS:2152 LT:\$26976

Trainer: G.J. Williams

Paleface Adios Karama Lois

ORANGE, BLACK SASH & SLEEVES

8th (FT6) 2100m MS ALBION PK 27 MAR 16/1 IDEAL TEL (2.01.0) (21M)

7th (FT11) 1609m MS ALBION PK 17 APR 66/1 KILBANK CRAIG NZ (2.00.8) (22.5M)

8th (FT9) 2100m MS ALBION PK 21 APR 20/1 SON OF GLORY (2.02.5) (13M)

• GLEN WARRIE: Ordinary efforts past 7 unplaced AP runs.

3

5 SON OF GLORY Ft

E G Kidd

Bay g 6yrs TS:1743 LS:1432 LT:\$24173

Out For Glory/Lucy's Promise

GREEN, BLUE STARS AND CUFFS

5th (FT3) 2100m MS REDCLIFFE 02 APR 11/4 ASTER HANOVER (2.05.4) (16M)

WON (FT2) 2100m MS ALBION PK 17 APR 8/1 (2.02.5) (5M,6M)

WON (FT8) 2100m MS ALBION PK 21 APR 11/4 (2.02.5) (HD,SH,NK)

- SON OF GLORY: In-form with past 2 wins: so well.

6 PRINCE OF HANEMA Ft

R J Shaw, R Stewart

Brown h 6yrs TS:1926 LS:28611 LT:\$41035

Glen Almahurst/Tilly Toivler

GREEN, ORANGE STRIPES, GREEN YOKE, ORANGE STARS, GREEN SLEEVES

2nd (FT1) 2100m MS GOLD COAST 23 FEB 5/2 FINE TIME (2.02.0) (10M,5M)

10th (FT2) 1609m MS GOLD COAST 02 MAR 5/2 VANLEA (2.02.1) (17M)

WON (FT1) 2100m MS REDCLIFFE 16 APR 3/1 (2.03.4) (7M,3M)

- PRINCE OF HANEMA: Enjoyed good run Redcliffe win; eachway now.

7 FURYS FINETO Ft

DAVID ROYLE

S J Boulous, J J Boulous, D Calabria, B V Mcfadden, K Schembri, R C Scherf

Bay h 4yrs TS:2156 LS:1878 LT:\$64279

Viking Fury/Worthy Tina

YELLOW & WHITE DIAMONDS, LIGHT BLUE SLEEVES

3rd (FT7) 2100m MS ALBION PK 27 MAR 7/4 SILAS MARINER (2.01.7) (3M,HD)

4th (FT3) 1609m MS ALBION PK 03 APR 3/1 SILAS MARINER (1.57.7) (16M)

WON (FT10) 2100m MS ALBION PK 17 APR 5/1 (2.01.7) (1.5M,3.5M)

- FURYS FINETO: Beat Radio Active (Wed. winner); class runner.

8 LAND PROFIT Ft

DARREL GRAHAM

J B Crowley

Bay g 6yrs TS:2735 LS:44415 LT:\$18870

Land Grant/Bonny Wee An

GREEN & GOLD STRIPES, GOLD YOKE & SLEEVES

3rd (FT7) 2060m MS TOOWOOMBA 08 APR 12/1 TRANSPRENEUR (2.04.1) (7M,1M)

8th (FT8) 2100m MS GOLD COAST 13 APR 8/1 FINE TIME (2.02.0) (19.5M)

WON (FT1) 2030m MS TWEED HDS 21 APR 7/1 (2.00.3) (HD,5M)

- LAND PROFIT: Patchy provincial form and poorly drawn.

9 SOVEREIGN VENTURE Ft

JOHN McTAGGETT

D McTaggett, G R Quigg

Bay g 7yrs TS:1506 LS:2629 LT:\$37258

Shank Hanover/Swi Ft Cindy

YELLOW, BLACK HORSESHOES, GREEN SLEEVES, RED CAP

3rd (FT2) 2100m MS ALBION PK 20 MAR 9/2 GLENAIRE (2.02.3) (LG HD,3M)

2nd (FT5) 2100m MS ALBION PK 27 MAR 5/2 IDEAL TEL (2.01.0) (NK,5.5M)

5th (FT8) 2100m MS ALBION PK 10 APR 8/1 VANSTON LORD (2.02.3) (17M)

- SOVEREIGN VENTURE: Solid stayer but unsuitably drawn.

10 TRANSPRENEUR Ft

RAY CROSS

P J Tierney, R W Cross

Bay h 8yrs TS:4756 LS:3232 LT:\$24195

Entrepreneur/Ruffled Feathers

BLACK & WHITE SQUARES, RED SLEEVES

2nd (FT4) 2100m MS GOLD COAST 13 APR 10/9 FINE TIME (2.02.0) (2.5M,8M)

11th (FT3) 1609m MS ALBION PK 17 APR 11/2 KILBANK CRAIG NZ (2.00.8) (33.5M)

7th (FT5) 3100m MS GOLD COAST 20 APR 14/1 TASKO NZ (2.04.4) (28.5M)

- TRANSPRENEUR: Runs his best races in the country.

11 ISLAND BYRD 1Em Ft

RICKY GORDON

W J Williams, R J Gordon

Bay g 7yrs TS:2425 LS:800 LT:\$16870

Alba Byrd/Tryphena

GREY, PINK CROSSED SASHES, HOOPED SLEEVES

3rd (FT9) 2100m MS REDCLIFFE 02 APR 8/1 ASTER HANOVER (2.05.4) (2M,2M)

4th (FT6) 2100m MS ALBION PK 10 APR 33/1 VANSTON LORD (2.02.3) (16M)

7th (FT4) 2100m MS REDCLIFFE 16 APR 9/2 PRINCE OF HANEMA (2.03.4) (23.5M)

- 18 • ISLAND BYRD: Wins are well spaced.

SCRATCHED

Trainer:A.G.Kidd

BOB SHAW

Trainer:R.J.Shaw

Trainer:D.A.Royle

Trainer:D.W.Graham

Trainer:W.J.McTaggett

Trainer:R.W.Cross

Trainer:R.J.Gordon

3

12 HIGH TRUST Ft

TIM GILLESPIE

S A Gillespie, B J Rogers

Brown h 6yrs TS:3138 LS:2526 LT:\$15777

Trustmaker/Faymont

BLUE, YELLOW DIAMOND AND SLEEVES

8th (FT3) 2100m MS REDCLIFFE 19 MAR 8/1 SMOOTH KID (2.04.2) (24.5M)

WON (FT2) 2100m MS ALBION PK 03 APR 25/1 (2.03.0) (1/2 HD,5M)

WON (FT3) 2030m MS TWEED HDS 21 APR 3/1 (2.04.1) (2M,3.5M)

- HIGH TRUST: Perfect run in recent AP win; tough drawn now.

13 LUCKY BYE ABLE Ft

MARK DUX

R A Pattemore, C D King, M P Cameron, B D Cameron

Bay h 5yrs TS:1523 LS:2247 LT:\$64367

Able Bye Bye/Thruout

WHITE, ORANGE STARS, BLACK SLEEVES

WON (FT8) 2300m MS REDCLIFFE 02 APR 11/10 (2.05.4) (HD,1.5M)

9th (FT1) 2100m MS ALBION PK 10 APR 12/1 VANSTON LORD (2.02.3) (24.5M)

2nd (FT7) 1609m MS ALBION PK 17 APR 20/1 KILBANK CRAIG NZ (2.00.8) (7M,2M)

- LUCKY BYE ABLE: Every chance (led) last Saturday; need luck here.

14 JUST ABBLE (ODM) 2Em Ft

PETER JOHNSON

P D Johnson

Bay g 6yrs TS:1705 LS:35411 LT:\$26148

Able Niatross/Kashmir Lass

WHITE, BLUE STARS & SLEEVES

8th (FT3) 2100m MS ALBION PK 13 MAR 20/1 CANNY BERRY NZ (2.00.2) (28.5M)


5th (FT10) 2100m MS GOLD COAST 23 MAR 6/1 MIGHTY MOSTEST NZ (2.02.3) (26M)


5th (FT10) 2100m MS ALBION PK 21 APR 5/1 SON OF GLORY (2.02.5) (7M)

- JUST ABBLE: Has to work too hard in his races.


1st 2nd 3rd 4th Time Margins

*The Albion Park Harness Racing Club
would like to thank*





FOR ITS GENEROUS SUPPORT



1.59

PACING PAIRS ASSAULT ON THE WORLD RECORD

Tonight, Vic Rasmussen is set to break his own world record for Pacing Pairs in a specially designed Regal Gemini sulky.

In August 1992, Vic drove Activity and Joker Is Wild into the history books by setting a new mark for Pacing Pairs on a 1000m track of 2:01.5 for the flying mile.

Tonight, Vic is the driver and co-ordinating trainer for a new team in Caesar Blue (1:57.9) and Silk Lynn NZ (2:02.3).

Not content with beating his existing world record of 2:01.5, Vic is keen to hold the outright record for any size track! That world record is 1:59.4, which was set on a mile track by the legendary Stanley Dancer in 1989. Anyone who saw Vic's masterly drive in August last year will know that this is not an idle dream.

Caesar Blue is trained by Nicole Hanrahan and Silk Lynn by Darrel Graham.

INTERFORMS PTY. LTD.
A.C.N. 010 549 738

Suppliers of
General Printing
&
Computer Forms

14 Virginia Street,
Virginia Qld. 4014
Telephone: (07) 865 1414
Fax: (07) 265 5260

RACE

4

8.10 p.m. STANDING START 2600m

INTERFORMS HANDICAP

Of \$5,218 — winner \$2980; second \$900; third \$500; fourth \$250; fifth \$120; sixth to last \$52. Graduation * Local Assessment within Handicap. Class record: Down Hill 3:17.8 (2:2.0) — 3/4/93.

TAB EXTRA DOUBLE (2nd LEG)

SELECTIONS: LONG FELLA 1, Chippengale 2, Red Hills 3.

SADDLE CLOTHS — RED

- 1 LONG FELLA NZ Ft** **A NEALE**
A P Neal, L M Neal
Bay g 8yrs **TS:1461 LS:2818 LT:\$57860** Trainer:S.Hunter
Son Of AfellaGold Chance
BLACK, RED V & STRIPED SLEEVES
WON (30) 3200m SS CAMBRIDGE NZ 03 MAR LONG FELLA (2.05.4)
0th (FT) 3000m SS MANAWATU NZ 07 APR ADVANCE PHEE (2.05.5) PU
11th (40) 2600m SS HAWERA NZ 10 APR CAPTAIN SERVANT (2.25.5)
- **LONG FELLA: NZ standing start experience; respect in this stable.**
- 2 ANOTHER LEADER Ft** **TIM GILLESPIE**
T C Walker, S S Walker
Bay g 7yrs **TS:2717 LS:3428 LT:\$38906** Trainer:T.C.Walker
William's BrotherLela Harkness
DARK BLUE, YELLOW STAR SASH & SLEEVES
6th (FT1) 2600m SS ALBION PK 03 APR 40/1 DOWN HILL (2.02.0) (13.5M)
8th (FT4) 2600m SS ALBION PK 17 APR 33/1 MIGHTY MOSTEST NZ (2.05.2) (24.5M)
2nd (FT3) 2100m MS ALBION PK 21 APR 12/1 SON OF GLORY (2.02.5) (HD,SH,NK)
- **ANOTHER LEADER: Improved AP 2nd Wednesday; plenty of chances.**
- 3 HENRY CHARLES (ODS) Ft** **DARREL GRAHAM**
P F Barker, B Parish, D E Parish, S R Woodberry
Bay g 6yrs **TS:3129 LS:3445 LT:\$34027** Trainer:D.W.Graham
AlphalteQueen's Law
GREEN & GOLD STRIPES, GOLD YOKE, SLEEVES & CAP
5th (159) 2480m SS ROCKLEA 03 APR 3/1 THE EMCEE (2.06.6) (21M)
7th (FT12) 2100m MS ALBION PK 10 APR 40/1 VANSTON LORD (2.02.3) (20.5M)
9th (FT6) 2600m SS ALBION PK 17 APR 20/1 MIGHTY MOSTEST NZ (2.05.2) (26M)
- **HENRY CHARLES: Usually begins well but risky lately.**
- 4 WIG AND GOWN NZ 10** **KEN BELFORD**
N R Jenkin
Brown g 6yrs **TS:3027 LS:47710 LT:\$38323** Trainer:K.J.Belford
Silk LegacyCalamar
GREEN, GOLD BRACES
5th (FT5) 2100m SS GOLD COAST 13 APR 6/1 UNION MONARCH (2.05.1) (9M)
4th (108) 2600m SS ALBION PK 17 APR 9/1 MIGHTY MOSTEST NZ (2.05.2) (15M)
10th (FT1) 2100m MS ALBION PK 21 APR 33/1 RADIO ACTIVE NZ (1.59.0) (96M)
- **WIG AND GOWN: Good beginner but weak run Wednesday.**
- 5 PARAGON PETE 10** **CRAIG MCKINNIS**
J P Madden
Bay h 6yrs **TS:100 LS:1304 LT:\$53486** Trainer:C.B.McKinnis
Chip Off The BlockRoyal Vein
YELLOW, BLACK BAND
3rd (107) 2600m SS ALBION PK 21 MAR 6/1 BONADAN (2.07.0) (3M,4M)
5th (FT7) 2100m MS ALBION PK 04 APR 16/1 KIMBOLTON RUN (2.01.3) (24.5M)
9th (FT6) 2100m MS ALBION PK 21 APR 150/1 RADIO ACTIVE NZ (1.59.0) (73M)
- **PARAGON PETE: Second-up from long spell; hard to fancy.**

22

4

6

CANNY BERRY NZ 10

Solid Earth Pty Ltd
Bay g 5yrs **TS:1481 LS:1642 LT:\$36873**
Berry HanoverCanny Miss
LIGHT BLUE, ROYAL BLUE & WHITE SASH
WON (108) 2100m SS ALBION PK 27 MAR 6/4 (2.03.8) (NK,SH HD)
12th (106) 2600m SS ALBION PK 03 APR 3/1 DOWN HILL (2.02.0) (32.5M)
4th (FT8) 2100m MS ALBION PK 21 APR 9/1 RADIO ACTIVE NZ (1.59.0) (19M)

- **CANNY BERRY: Handy run Wednesday; eachway hope here.**

7 VICTOR BOY 20

T Price, K Price
Bay g 7yrs **TS:200 LS:1823 LT:\$50402**
Wild RoverManoroki
BLACK, RED V & STRIPED SLEEVES
12th (2013) 2600m SS ALBION PK 30 MAY 25/1 LITTLE RUFUS (2.05.7) (45M)
8th (103) 2100m SS IPSWICH 22 MAR 5/1 DIAMOND ARROW NZ (2.04.8) (59M)
6th (209) 2600m SS ALBION PK 17 APR 33/1 MIGHTY MOSTEST NZ (2.05.2) (21.5M)

- **VICTOR BOY: Disappointed twice since a spell; later, perhaps.**

8 UNION MONARCH 20

E G Daw
Brown g 8yrs **TS:2053 LS:1605 LT:\$46364**
Monarch HanoverLatom Star
DARK BLUE, GOLD CROSSED SASHES & SLEEVES, DARK BLUE ARMBANDS
5th (FT1) 2100m MS ALBION PK 10 APR 4/1 TASKO NZ (1.59.6) (13M)
WON (FT7) 2100m SS GOLD COAST 13 APR 6/1 (2.05.1) (1/2 NK,3M)
WON (FT11) 1609m MS ALBION PK 17 APR 7/1 (1.59.1) (5M,3.5M)

- **UNION MONARCH: Strong stayer but best AP form from mobiles.**

9 PERCEPTIBLE 30

P R McGrath, M McGrath
Bay g 6yrs **TS:2718 LS:2357 LT:\$47124**
LordshipNoble Conquest
PURPLE, WHITE SASH
7th (108) 2480m SS ROCKLEA 03 APR 12/1 THE EMCEE (2.06.6) (41M)
4th (FT4) 2100m MS GOLD COAST 06 APR 33/1 TASKO NZ (1.58.0) (22.5M)
2nd (FT9) 2480m SS ROCKLEA 10 APR 40/1 KING LEO (2.07.9) (1/2 HD,11M)

- **PERCEPTIBLE: Provincial form fair but tested at AP.**

10 RED HILLS (ODS) 30

R J Braag
Chestnut m 6yrs **TS:1664 LS:1962 LT:\$35942**
Ambro WhizDry And Dusty
BLUE, GOLD DIAMOND
WON (2012) 2600m SS ALBION PK 27 FEB 4/1 (2.05.8) (3M,LG NK)
4th (3010) 2600m SS ALBION PK 06 MAR 3/1 CANNY BERRY NZ (2.04.4) (10M)
2nd (3013) 2600m SS ALBION PK 20 MAR 7/1 DOWN HILL (2.03.1) (NS,5.5M)

- **RED HILLS: Multiple wins these conditions; top chance.**

11 CHIPPENGALE 40

H Bahr, G D Bahr, D S Black, M M Black
Bay m 5yrs **TS:1145 LS:1362 LT:\$113459**
Chip Off The BlockKoomoeela Gale
BLUE, GOLD DIAMOND
3rd (FT7) 2100m MS ALBION PK 27 FEB 3/1 SHUTTLE DRIVE (1.57.3) (4M,NS)
3rd (FT5) 2100m MS ALBION PK 06 MAR 5/1 MAKER FUSE (1.57.2) (3M,4.5M)
2nd (FT4) 2100m MS ALBION PK 27 MAR 6/1 RUSTIC LAD NZ (1.59.9) (1/2 NK,21M)

- **CHIPPENGALE: Class runner and handles standing starts; go well.**

1st 2nd 3rd 4th Time Margins 23

**Win every
time without
placing a
bet**

Join the Ansett Frequent Flyer Programme and you automatically become a winner every time you travel.

Ansett Frequent Flyer is Australia's richest Airline Award Programme.

Become a member, and each time you fly Ansett Australia, or use the services of our Programme Partners, you will earn Award points.

Accumulate these points and then exchange them for free Holidays, Flights, Car Rental, Hotel Accommodation, Upgrades or General Merchandise for yourself and family.

Membership can be instant. For details, telephone

008 028 811

**Ansett
Frequent Flyer.**



**Inter Dominion
Pacing Championship**

Points Score After 2nd Night

16
13
11
8

| Points | Horse |
|--------|---|
| 29 | Christopher Vance NZ, Jack Morris NZ (40) |
| 27 | Blossom Lady NZ, Westburn Grant (40) |
| 26 | Master Musician NZ (42) |
| 24 | Franco Tiger, Warrior Khan, Chokin NZ, Level Advice |
| 17 | John Owen, Weona Warrior, Hilarion Star |
| 16 | Two Under |
| 15 | Defoe NZ, Band Magic |
| 14 | Anvil Lad NZ |
| 13 | Rustic Lad NZ, The Unicorn NZ (26) |
| 12 | Classic Alibi NZ, Red Chip |
| 11 | Hilarious Sent, Impressionist NZ, Insutchta NZ (22) |
| 10 | Sogo NZ |
| 9 | Admiral Chimes NZ, Almost An Angel (17) |
| 8 | Lord Muckalee, Maker Fuse |
| 7 | Dark Pearl, Valley Champ (14) |
| 6 | Bowral Boy NZ, Franco Glen (14) |
| 5 | Captain Lee NZ (16) |
| 3 | Pappy McCoy (12) |
| 2 | The Emcee |
| 1 | Caesars Halo |

Suspense
ADRENALIN
Win!



CONRAD
JUPITERS

GOLD COAST

OPERATED BY HILTON HOTELS

Broadbeach Island, Gold Coast Highway, Phone: 921 133

HIT THE SPOT

RACE

5

8.40 p.m.

MOBILE START

2600m

3.09.4
1.57.2
73.1
30.3
20.5
20.0
20.0
156.6
15.4

**CONRAD JUPITERS
INTER DOMINION
PACING CHAMPIONSHIP**

7th Heat

Of \$22,500 — winner \$14,500 plus trophy and rug; second \$4500; third \$2250; fourth \$750; fifth \$500. For approved pacers * Group Preferential Barrier Draw on Lifetime Earnings. Track record: Run The Risk 3:14.6 (3:00.4) — 3/12/88. Race record: *Not previously run.*

TAB TREBLE (1st LEG)

SELECTIONS: JACK MORRIS 1, Christopher Vance 2, Level Advice 3.

SADDLE CLOTHS — CONRAD BLUE

1 HILARIOUS GENT Ft (NSW) BRIAN HANCOCK

True Blue Pacing Synd

Bay g 5yrs TS:1134 LS:1484 LT:\$79127

Trainer: B.P.Hancock

Hilarion Gentle Rose

ORANGE, BLACK CHECKS, ORANGE SLEEVES

WON (FT1) 1609m MS HAROLD PK 02 APR 1/2 (1.59.1) (2.5M, 3M)

6th (FT5) 2100m MS ALBION PK 17 APR 50/1 JACK MORRIS NZ (1.55.7) (33M)

9th (FT8) 1609m MS ALBION PK 21 APR 66/1 WESTBURN GRANT (1.57.5) (11M)

2 RUSTIC LAD NZ Ft (QLD) GRAEME BOWYER

Solid Earth Pty Ltd

Bay g 5yrs TS:1261 LS:26106 LT:\$79347

Trainer: J.Bowyer

Whata Baron Usa Pegasus

LIGHT BLUE, ROYAL BLUE & WHITE SASH

WON (FT6) 2100m MS ALBION PK 27 MAR 9/10 (1.59.9) (1/2 NK, 21M)

6th (FT3) 2100m MS ALBION PK 17 APR 66/1 LEVEL ADVICE (1.58.0) (11.5M)

7th (FT8) 1609m MS ALBION PK 21 APR 80/1 FRANCO TIGER (1.56.1) (12M)

3 CLASSIC ALBA NZ Ft (VIC) ALAN DONOHOE

K Radburn, F Vittorelli, R Hockham, H Birrell, J Agosta

Bay g 6yrs TS:1952 LS:1543 LT:\$101162

Trainer: P.V.Walsh

Alba Counsell Lopez Girl

RED, YELLOW CROSSED SASHES

WON (FT5) 2750m SS MILDURA 02 APR FAV (2.05.7) (2M, 2.5M)

4th (FT3) 2100m MS ALBION PK 17 APR 33/1 JACK MORRIS NZ (1.55.7) (25.5M)

10th (FT9) 1609m MS ALBION PK 21 APR 66/1 CHRISTOPHER VANCE NZ (1.54.6) (17.5M)

4 ALMOST AN ANGEL Ft (QLD) BOB MORLEY

J M Morley

Bay g 4yrs TS:1052 LS:2286 LT:\$71346

Trainer: R.H.Morley

Vanston Hanover Ripper Adios

LIGHT BLUE, DARK BLUE STARS

2nd (FT4) 1609m MS ALBION PK 03 APR 9/10 SILAS MARINER (1.57.7) (14M, LG HD)

9th (FT1) 2100m MS ALBION PK 17 APR 150/1 LEVEL ADVICE (1.58.0) (16.5M)

8th (FT3) 1609m MS ALBION PK 21 APR 200/1 CHRISTOPHER VANCE NZ (1.54.6) (15.5M)

5 LEVEL ADVICE Ft (VIC) ANDREW PEACE

M J Hanlan

Bay g 6yrs TS:1151 LS:21152 LT:\$242230

Trainer: A.D.Peace

Garry's Advice Beauty Break

BLACK & RED CHECKS, BLACK SLEEVES

WON (FT5) 1830m MS GEELONG 08 APR FAV (2.00.1) (4M, 2M)

WON (FT6) 2100m MS ALBION PK 17 APR 7/1 (1.58.0) (5m, 5m)

5th (FT5) 1609m MS ALBION PK 21 APR 11/8 WESTBURN GRANT (1.57.5) (8M)

5

6 HILARION STAR Ft (WA)

C Cummins, K N Cummins, G Puglia
 Chestnut h 4yrs TS:1373 LS:623 LT:\$143549
 HilarionSummer Honey
 BROWN, PINK BAND

CHRIS LEWIS

Trainer:C.Cummins

4th (MB7) 2500m MS GLOUCESTER PK 19 MAR 4/7 JOHN OWEN (2.00.8)
 3rd (FT4) 2100m MS ALBION PK 17 APR 9/1 LEVEL ADVICE (1.58.0) (5m,5m)
 7th (FT7) 1609m MS ALBION PK 21 APR 33/1 WESTBURN GRANT (1.57.5) (9.5M)

7 IMPRESSIONIST NZ Ft (VIC)

J A McDonough, A Davis, G Wilson, J W Tyrmand, K A Fawcett
 Black h 5yrs TS:1122 LS:1373 LT:\$418993

TED DEMMLER

Trainer:T.E.Demmler

Talk About ClassTilla
 ORANGE, BLACK DIAMOND
 3rd (FT5) 1940m MS MOONEE VLLY 03 APR 9/4 DARK PAUL (1.58.9) (4M,HFHD)
 7th (FT11) 2100m MS ALBION PK 17 APR 12/1 JACK MORRIS NZ (1.55.7) (34M)
 8th (FT7) 1609m MS ALBION PK 21 APR 40/1 WESTBURN GRANT (1.57.5) (9.5M)

8 JACK MORRIS NZ Ft (WA)

P R Volk, S Volk
 Bay g 5yrs TS:1697 LS:20109 LT:\$323484
 Surmo HanoverBelinda Morris

ROD CHAMBERS

Trainer:S.Harney

GOLD, GREEN SHAMROCKS, WHITE STAR SLEEVES
 2nd (FT1) 2380m MS MOONEE VLLY 27 FEB FAV MASTER MUSICIAN NZ (1.56.7) (6M,4M)
 WON (FT9) 2100m MS ALBION PK 17 APR 5/4 (1.55.7) (HD,17M)
 2nd (FT11) 1609m MS ALBION PK 21 APR 7/4 FRANCO TIGER (1.56.1) (3.5M,NS)

9 CHRISTOPHER VANCE NZ Ft TONY HERLIH

R R Reid, Lorna Reid Synd, J C Reid
 Bay g 6yrs TS:18412 LS:19134 LT:\$1537476

Trainer:R.C. & B Purdon

Vance HanoverDisco Girl
 SILVER GREY, BLUE SPOTS (NZ)
 2nd (FT) 2600m MS ADDINGTON NZ 10 APR BLOSSOM LADY (2.00.2)
 2nd (FT11) 2100m MS ALBION PK 17 APR 7/1 BLOSSOM LADY NZ (1.56.9) (5.5M,NS)
 WON (FT6) 1609m MS ALBION PK 21 APR 5/1 (1.54.6) (LG NK,NS)

10 SOGO NZ Ft (NZ)

Parnell Synd
 Bay m 5yrs TS:2015 LS:722 LT:\$312075
 Genghis KhanPsycho Nz

BARRY PURDON

Trainer:R.C. & B Purdon

SILVER GREY, BLUE SPOTS
 3rd (FT) 3200m SS ADDINGTON NZ 03 APR CHOKIN (2.02.1)
 10th (FT11) 2100m MS ALBION PK 17 APR 16/1 LEVEL ADVICE (1.58.0) (17.5M)
 6th (FT9) 1609m MS ALBION PK 21 APR 40/1 FRANCO TIGER (1.56.1) (11.5M)

11 THE EMCEE Ft (QLD)

K J Sheppard, R K Sheppard, R Bonaccorso, K J Waters, J M Waters
 Bay h 6yrs TS:331012 LS:511522LT:\$321439

RAY CROSS

Trainer:R.W.Cross

Majestic ChanceCerebel
 GREEN, RED SASH, WHITE SLEEVES
 9th (4511) 2100m SS GOLD COAST 13 APR 6/1 UNION MONARCH (2.05.1) (15.5M)
 12th (FT12) 2100m MS ALBION PK 17 APR 200/1 BLOSSOM LADY NZ (1.56.9) (94.5M)
 12th (FT4) 1609m MS ALBION PK 21 APR 200/1 FRANCO TIGER (1.56.1) (24.5M)

12 FRANCO GLEN (ODM) Ft (NSW) DAVID AIKEN

C Aiken, R S Walker, M J Rowles, P Budin, W L Budin
 Bay h 6yrs TS:1325 LS:1032 LT:\$164146

Trainer:D.Aiken

Bo Scots Blue ChipGay Tennessee
 YELLOW, BLUE STARS ON SLEEVES
 7th (FT6) 2350m MS HAROLD PK 08 APR 3 INSUTCHA NZ (2.01.8) (26.5M)
 11th (FT8) 2100m MS ALBION PK 17 APR 50/1 JACK MORRIS NZ (1.55.7) (47M)
 9th (FT1) 1609m MS ALBION PK 21 APR 50/1 CHRISTOPHER VANCE NZ (1.54.6) (15.5M)

1. HILARIOUS GENT (NSW): Average efforts 2 unplaced heat runs, latest 11m 9th Westburn Grant 1:57.5 heat Wednesday after 33m 6th Jack Morris 2100m MS heat. Early speed, could sneak a place this draw.

2. RUSTIC LAD (QLD): Run fair races both heats. Parked out 12m 7th Franco Tiger 1:56.1 here Wednesday after 6th Level Advice 2100m MS heat. Capable stayer and 2600m suits; place hope.

3. CLASSIC ALBA (VIC): Started 66-1 18m away in Christopher Vance's 1:54.6 heat here Wednesday after 4th (26m) Jack Morris 2100m MS heat. Hard to seriously fancy.

4. ALMOST AN ANGEL (QLD): Disappointed both heats and can't have. Started 200-1 8th (16m) Christopher Vance 1:54.6 heat Wednesday. Lacks early speed.

5. LEVEL ADVICE (VIC): Brilliant beginner, certain to lead out. Led 2100m MS heat win (1:58 rate) but ordinary 8m 5th Westburn Grant slowest 1:57.5 heat Wednesday when led but headed home turn. Hard to recommend on that run over the longer 2600m.

6. HILARION STAR (WA): Early speed and both heat runs fair. Trailed leader 3rd (10) Level Advice 2100m MS 1:58 heat before 33-1 7th (10m) Westburn Grant 1:57.5 heat Wednesday. Not the worst.

7. IMPRESSIONIST (VIC): Hasn't fired in 2 heat runs so hard to consider. Drew second-row 8th (10m) Westburn Grant 1:57.5 heat Wednesday when never a chance. Had an interrupted campaign past 6 months.

8. JACK MORRIS (WA): Brilliant. Big 2100m MS heat win (fastest) 1:55.7 rate before driver quizzed late-finishing 2nd (4m) Franco Tiger 1:56.1 heat Wednesday. Should beat these if goes forward at start.

9. CHRISTOPHER VANCE (NZ): Great campaigner and proved this with plunge 1:54.6 heat win Wednesday (10-1, 5-1), sat one-one from bell. Versatile type, just as well suited at 2600m but awkward draw doesn't help his winning prospects.

10. SOGO (NZ): Only 6th (12m) Franco Tiger 1:56.1 heat Wednesday after never a chance in Level Advice's 2100m MS heat here last Saturday. Hard to fancy from the second row.

11. THE EMCEE (QLD): Completely outclassed. Finished last both heats.

12. FRANCO GLEN (NSW): Started barrier 8 Wednesday when broke start, now outside draw. Only 9th (16m) Christopher Vance 1:54.6 heat here Wednesday. Not expected to trouble these.

**Suspense
ADRENALIN
Win!**



**CONRAD
JUPITERS**

GOLD COAST

OPERATED BY HILTON HOTELS

Broadbeach Island Gold Coast Jupiters, Phone 961 1111

HIT THE SPOT

RACE

9.10 p.m. MOBILE START 2600m

6

**CONRAD JUPITERS
INTER DOMINION
PACING CHAMPIONSHIP**

8th Heat

Of \$22,500 — winner \$14,500 plus trophy and rug; second \$4500; third \$2250; fourth \$750; fifth \$500. For approved pacers * Group Preferential Barrier Draw on Lifetime Earnings. Track record: Run The Risk 3:14.6 (2:00.4) — 3/12/88. Race record: *Not previously run.*

**TAB TREBLE (2nd LEG)
TAB DOUBLE (1st LEG)**



SELECTIONS: WARRIOR KHAN 1, Chokin 2, Blossom Lady

SADDLE CLOTHS — CONRAD BLUE

1

CAPTAIN LEE NZ Ft (WA)

ROSS OLIVER

R L Fowler, M J Fowler
Brown h 7yrs **TS:2024 LS:531 LT:\$177389**
MidshipmanLee Nandina
BLUE, WHITE STRIPED SLEEVES

Trainer:R.A.Oliver

7th (FT9) 2610m MS LAUNCESTON 10 APR 7/4 GENGHIS KARALTA (2.00.4) (36.5)
9th (FT7) 2100m MS ALBION PK 17 APR 100/1 JACK MORRIS NZ (1.55.7) (44M)
12th (FT11) 1609m MS ALBION PK 21 APR 150/1 WESTBURN GRANT (1.57.5) (20M)

2

WARRIOR KHAN Ft (VIC)

ANDREW PEACE

G W Brodie
Brown g 4yrs **TS:823 LS:1683 LT:\$138457**
Genghis KhanTilbaka

Trainer:A.D.Peace

WHITE, LIGHT BLUE DIAMOND, LIGHT BLUE STRIPED SLEEVES
WON (FT8) 2380m MS MOONEE VLLY 03 APR 4/13FAV (2.01.0) (9M,1.5M)
2nd (FT4) 2100m MS ALBION PK 17 APR 9/1 JACK MORRIS NZ (1.55.7) (HD,17M)
3rd (FT11) 1609m MS ALBION PK 21 APR 12/1 CHRISTOPHER VANCE NZ (1.54.6) (LG NK,NS)

3

LORD MUCKALEE Ft (VIC)

GRAHAM MORGAN

J A Monk
Brown g 6yrs **TS:721 LS:1043 LT:\$125729**
Muckalee StrikeSaint Mary Redcliffe

Trainer:G.J.Morgan

WHITE, BROWN DIAMONDS, YELLOW SLEEVES
3rd (1011) 2750m SS MILDURA 02 APR 9/2 CLASSIC ALBA NZ (2.05.7) (2M,2.5M)
7th (FT5) 2100m MS ALBION PK 17 APR 40/1 LEVEL ADVICE (1.58.0) (13M)
11th (FT10) 1609m MS ALBION PK 21 APR 25/1 WESTBURN GRANT (1.57.5) (19.5M)

4

RED CHIP Ft (NSW)

RICHARD HANCOCK

W L Negus, K Negus, S Negus, C H Paton
Bay g 8yrs **TS:722 LS:301413LT:\$99733**
Caesar Blue ChipBelle Cello

Trainer:D.R.Hancock

ORANGE, BLACK STRIPED SLEEVES
WON (FT5) 2500m MS WAGGA 20 FEB 10/9 (2.20.0) (1M,8M)
10th (FT2) 2100m MS ALBION PK 17 APR 66/1 JACK MORRIS NZ (1.55.7) (44M)
4th (FT3) 1609m MS ALBION PK 21 APR 80/1 FRANCO TIGER (1.56.1) (9.5M)

3.15.6
40-1-137

6

5 **MAKER FUSE Ft (QLD)**

F Klazema, H Klazema

Bay h 5yrs **TS:2366 LS:24153 LT:\$92088**

Trustmaker Polly Fuse

WHITE, GOLD HORSESHOE & SLEEVES

4th (FT8) 1609m MS TWEED HDS 07 APR 9/4 ALBA TOFF NZ (2.00.5) (8.5M)

8th (FT1) 2100m MS ALBION PK 17 APR 330/1 JACK MORRIS NZ (1.55.7) (37M)

10th (FT12) 1609m MS ALBION PK 21 APR 200/1 WESTBURN GRANT (1.57.5) (16.5M)

CRAIG MCKINNIS

Trainer: F. Klazema

6

6 **JOHN OWEN Ft (WA)**

L I Sumich, G Stampalia

Chestnut g 7yrs **TS:941 LS:1261 LT:\$88962**

Patron ScoreDash Of Colour

LIGHT BLUE, RED DIAMONDS, WHITE HOOPED SLEEVES

WON (FT1) 2500m SS GLOUCESTER PK 02 APR 4/74/5 (2.04.8) (3.5,2.5)

4th (FT6) 2100m MS ALBION PK 17 APR 12/1 BLOSSOM LADY NZ (1.56.9) (9.5M)

5th (FT6) 1609m MS ALBION PK 21 APR 8/1 FRANCO TIGER (1.56.1) (10M)

GLEN STAMPALIA

Trainer: G. Stampalia

7 **DEFOE NZ Ft (NZ)**

Club Classic Lucky 7 Syn

Brown g 7yrs **TS:3031 LS:2986 LT:\$404772**

Stampede Dream Bel

ORANGE, BLACK DIAMOND, WHITE SLEEVES

2nd (FT3) 1830m MS GEELONG 08 APR 11/4 LEVEL ADVICE (2.00.1) (4M,2M)

4th (FT10) 2100m MS ALBION PK 17 APR 16/1 LEVEL ADVICE (1.58.0) (11M)

7th (FT4) 1609m MS ALBION PK 21 APR 5/4 CHRISTOPHER VANCE NZ (1.54.6) (11.5M)

TED DEMMLER

Trainer: T.E. Demmler

8 **CHOKIN NZ Ft (NZ)**

Pacers Australia T Henderson Mgr, M Joyce, J Loughnan, B H De Boer

Bay g 4yrs **TS:1054 LS:1081 LT:\$554055**

Vance Hanover Nell's Pride

LIGHT BLUE, WHITE VEE, DARK BLUE SLEEVES

WON (FT) 3200m SS ADDINGTON NZ 03 APR CHOKIN (2.02.1)

3rd (FT12) 2100m MS ALBION PK 17 APR 13/8 JACK MORRIS NZ (1.55.7) (HD,17M)

2nd (FT2) 1609m MS ALBION PK 21 APR 5/4 WESTBURN GRANT (1.57.5) (1/2 HD,2M)

TONY HERLIHY

Trainer: R.C. & B Purdon

9 **INSUTCHA NZ Ft (NZ)**

Parnell Synd

Bay h 6yrs **TS:1733 LS:641320LT:\$296260**

Lordship Lucy Lumber

YELLOW, DARK BLUE STRIPPED SLEEVES

WON (FT1) 2350m MS HAROLD PK 08 APR 2/1 (2.01.8) (HFHD,5M)

11th (FT9) 2100m MS ALBION PK 17 APR 50/1 LEVEL ADVICE (1.58.0) (22.5M)

4th (FT1) 1609m MS ALBION PK 21 APR 75/1 WESTBURN GRANT (1.57.5) (2.5M)

DAVID AIKEN

Trainer: D.Aiken

10 **PAPPY MCCOY Ft (NSW)**

A Mitriss, R Doran

Black h 6yrs **TS:1211 LS:1708 LT:\$273933**

Kawartha Robust Meagan Brooke

ORANGE & BLACK CHECKS, ORANGE SLEEVES

4th (FT1) 1830m MS GEELONG 08 APR 14 LEVEL ADVICE (2.00.1) (8M)

12th (FT8) 2100m MS ALBION PK 17 APR 200/1 LEVEL ADVICE (1.58.0) (24M)

11th (FT5) 1609m MS ALBION PK 21 APR 50/1 FRANCO TIGER (1.56.1) (22.5M)

BRIAN HANCOCK

Trainer: B.P. Hancock

11 **THE UNICORN NZ Ft (VIC)**

P O Anderson, R Broomhall, K R Loughnan, P Pike, S L Dove, C F O'Dwyer

Bay h 6yrs **TS:1655 LS:1727 LT:\$368001**

Vance Hanover Significant

YELLOW, RED MALTESE CROSS

2nd (FT6) 1940m MS MOONEE VLLY 03 APR 4 DANK PAUL (1.58.9) (4M, HFHD)

7th (FT9) 2100m MS ALBION PK 17 APR 9/1 BLOSSOM LADY NZ (1.56.9) (23M)

6th (FT7) 1609m MS ALBION PK 21 APR 33/1 CHRISTOPHER VANCE NZ (1.54.6) (11.5M)

STEPHEN DOVE

Trainer: R.V. Knight

6

12 **BLOSSOM LADY NZ Ft (NZ)****ANTHONY BUTT**

Polly Synd

Bay m 8yrs **TS:2088 LS:2577 LT:\$825620**

Farm Timer Lumber Lady

MAROON & GREYS STRIPES, MAROON SLEEVES

WON (FT) 2600m MS ADDINGTON NZ 10 APR BLOSSOM LADY (2.00.2)

WON (FT8) 2100m MS ALBION PK 17 APR 5/1 (1.56.9) (5.5M, NS)

3rd (FT1) 1609m MS ALBION PK 21 APR 9/2 FRANCO TIGER (1.56.1) (3.5M, NS)

Trainer: D.G. Jones

1st 2nd 3rd 4th Time Margins

COMMENTS TO RACE SIX

1. **CAPTAIN LEE (WA)**: Failed to beat one home at 150-1 in Westburn Grant's 1:57.5 mile heat Wednesday (beaten 20m). Better drawn now but hard to recommend. Only 9th Jack Morris 2100 MS heat last Saturday.

2. **WARRIOR KHAN (VIC)**: Outstanding efforts both heat runs. Big hd 2nd Jack Morris 2100m MS heat last Saturday before drew poorly, rattled home metre 3rd Christopher Vance fastest 1:54.6 heat Wednesday. Ideally suited this draw over 2600m trip. Go close.

3. **LORD MUCKALEE (VIC)**: Never a chance second-row draw 20m away in Westburn Grant's 1:57.5 heat here Wednesday after blocked for a run 13m 7th Level Advice 2100m MS 1:58 heat. Rough place hope from this favourable draw.

4. **RED CHIP (NSW)**: Trailed leader 4th (10m) Franco Tiger 1:56.1 heat here Wednesday after faded badly in Jack Morris' 2100m MS heat, 44m away at 66-1. Need luck at 2600m.

5. **MAKER FUSE (QLD)**: Outclassed. Started 200-1, 17m away in Westburn Grant's 1:57.5 heat Wednesday, drew poorly. Off pole 37m 8th Jack Morris 2100m MS 1:55.7 heat last Saturday.

6. **JOHN OWEN (WA)**: Pulled up sore after heat run Wednesday night and will undergo vet test before racing. Handy 10m 5th Franco Tiger 1:56.1 heat after 4th (10m) Blossom Lady 2100m MS 1:56.9 heat on wet track. Place possibilities.

7. **DEFOE (NZ)**: No luck in Wednesday heat, trailed leader and blocked for run 12m 7th Christopher Vance 1:54.6 heat after big 11m 4th Level Advice 2100m MS 1:58 heat. Can place in this.

8. **CHOKIN (NZ)**: Big 1/2hd 2nd Westburn Grand 1:57.5 heat here Wednesday when settled 8th (barrier 2) and rattled home. Also sound 17m 3rd Jack Morris, Warrior Khan 2100m MS 1:55.7 heat last Saturday. Widely drawn but hard to beat.

9. **INSUTCHA (NZ)**: Better 4th (3m) Westburn Grant 1:57.5 heat here Wednesday after never got clear in Level Advice's 2100m MS heat. Could sneak into a place as the 2600m suits.

10. **PAPPY MCCOY (NSW)**: Couldn't recommend on 2 poor heat runs. Was 23m away in Franco Tiger's 1:56.1 heat Wednesday. Will also struggle at 2600m.

11. **THE UNICORN (VIC)**: Fast beginner, unsuitably drawn here. Led to home turn 12m 6th Christopher Vance fastest 1:54.6 heat Wednesday after ordinary 7th (23m) Blossom Lady 2100m MS 1:56.9 heat (wet tk). Others preferred.

12. **BLOSSOM LADY (NZ)**: Top staying NZ mare and ideally suited at 2600m. Won 2100m MS heat (1:56.9) rate on wet track and then game 3rd (3 1/2m) Franco Tiger 1:56.1 heat Wednesday. Will figure in the finish.

**WILLWIN PACERS
UNDER SADDLE CHAMPIONSHIP
RACE FIELDS — Final**

Saturday, 24 April, 1993

| | | |
|---|-------|-------------------|
| Princess Davita | ft | Ann Manwaring |
| <i>Gold, red diamonds, blue sleeves</i> | | |
| Noble Lad (2 Res) | ft | Scott Kunde |
| <i>Orange, blue maltese cross and sleeves</i> | | |
| Arcadia Gold | ft | <i>SCRATCHED</i> |
| Tinseltown Gal | ft | Vicki Rasmussen |
| <i>Green and gold</i> | | |
| Golden Boots | ft | Kylie Rasmussen |
| <i>Purple and gold hoops</i> | | |
| Toot Toot | 10m | Natalie Rasmussen |
| <i>Yellow, brown braces, white sleeves</i> | | |
| Ten To One | 15m | Wendy Boyd |
| <i>Purple, white diamond and hooped sleeves</i> | | |
| Arden Du Jour (1 Res) | 20M | Gary Litzow |
| <i>Red and green checks, black sleeves</i> | | |
| Swirlum's Fella | 20MOD | Christie Godfrey |
| <i>Blue, red crossed sash, white sleeves</i> | | |
| Merchant Joe | 25m | |
| <i>Gold, green T, green striped sleeves</i> | | |

RACE

7

9.40 p.m. MOBILE START 2600m

**CONRAD JUPITERS
INTER DOMINION
PACING CHAMPIONSHIP**

28.5
29.
1.57.9 9th Heat *12m x 9m.*

Of \$22,500 — winner \$14,500 plus trophy and rug; second \$4500; third \$2250; fourth \$750; fifth \$500. For approved pacers * Group Preferential Barrier Draw on Lifetime Earnings. Track record: Run The Risk 3:14.6 (2:00.4) — 3/12/88. Race record: *Not previously run.*

**TAB TREBLE (3rd LEG)
TAB DOUBLE (2nd LEG)**

SELECTIONS: MASTER MUSICIAN 1, Two Under 2, Franco Tiger 3.

SADDLE CLOTHS — CONRAD BLUE

BAND MAGIC Ft (NSW)

PETER REGENT

R Mcmillan
Brown/black h 6yrs TS:2167 LS:2539 LT:\$212515 Trainer:P.R.Regent
Big Band Sound/Magic Symbol
YELLOW, MAROON STARS, BLACK SLEEVES
2nd (FT5) 2350m MS HAROLD PK 08 APR 5 INSUTCHA NZ (2.01.8) (HFHD,5M)
9th (FT1) 2100m MS ALBION PK 17 APR 50/1 BLOSSOM LADY NZ (1.56.9) (36M)
3rd (FT3) 1609m MS ALBION PK 21 APR 100/1 WESTBURN GRANT (1.57.5) (1/2 HD,2M)

2 VALLEY CHAMP Ft (WA)

GARY HALL

Y Parr
Brown g 4yrs TS:1262 LS:1547 LT:\$131126 Trainer:D.T.Parr
Racy Prince/Granny's Last
BLUE, RED HALVES, GOLD SLEEVES
WON (MB7) 2100m MS GLOUCESTER PK 02 APR 9/43/1 (1.59.2) (NECK,3)
8th (FT3) 2100m MS ALBION PK 17 APR 9/1 BLOSSOM LADY NZ (1.56.9) (28M)
11th (FT8) 1609m MS ALBION PK 21 APR 150/1 CHRISTOPHER VANCE NZ (1.54.6) (26.5M)

3 ANVIL LAD NZ Ft (NZ)

MURRAY EDMONDS

G H Beirne
Bay h 5yrs TS:1412 LS:1773 LT:\$65160 Trainer:M.P.Edmonds
Alberton/Vicky Jane
WHITE, RED SASH, YELLOW SLEEVES
4th (FT) 2600m MS ADDINGTON NZ 10 APR BLOSSOM LADY ()
6th (FT4) 2100m MS ALBION PK 17 APR 100/1 BLOSSOM LADY NZ (1.56.9) (21.5M)
6th (FT4) 1609m MS ALBION PK 21 APR 25/1 WESTBURN GRANT (1.57.5) (8.5M)

4 TWO UNDER Ft (NZ)

BARRY PURDON

Two Under Synd
Bay g 6yrs TS:1823 LS:1816 LT:\$214998 Trainer:R.C. & B Purdon
Sokys Atom/My Double Birdie Nz
SILVER GREY, BLUE SPOTS
4th (FT) 3200m SS ADDINGTON NZ 03 APR CHOKIN (2.02.1)
5th (FT10) 2100m MS ALBION PK 17 APR 20/1 JACK MORRIS NZ (1.55.7) (31.5M)
5th (FT10) 1609m MS ALBION PK 21 APR 33/1 CHRISTOPHER VANCE NZ (1.54.6) (8M)

7

7

5 WEONA WARRIOR Ft (NSW) BRIAN HANCOCKG Fischl, S Fischl, G Jablonski, H Jablonski
Bay h 4yrs **TS:1041 LS:1967 LT:\$91252**

Trainer:B.P.Hancock

Southern Gentleman/Weona Jewel
ORANGE, BLACK CHECKS, ORANGE SLEEVES
2nd (FT5) 2420m MS PENRITH 01 APR 9/10 TACT RASHAD NZ (2.01.3) (10.2.5)
5th (FT2) 2100m MS ALBION PK 17 APR 40/1 BLOSSOM LADY NZ (1.56.9) (20.5M)
4th (FT2) 1609m MS ALBION PK 21 APR 25/1 CHRISTOPHER VANCE NZ (1.54.6) (6M)**6 ADMIRAL CHIMES NZ Ft (NSW) WAYNE INNES**P A Whitney, B W Taylor
Bay g 5yrs **TS:19110 LS:25211 LT:\$64948**

Trainer:G.W.Innes

Admiral Halsey/Quiet Chimes
DARK BLUE, WHITE V, DARK GREEN SLEEVES
4th (FT7) 1609m MS HAROLD PK 02 APR 10 HILARIOUS GENT (1.59.1) (10.5M)
8th (FT2) 2100m MS ALBION PK 17 APR 200/1 LEVEL ADVICE (1.58.0) (16M)
9th (FT12) 1609m MS ALBION PK 21 APR 200/1 FRANCO TIGER (1.56.1) (17M)**7 DARK PAUL Ft (VIC) ANDREW PEACE**M J Hanlan
Brown h 5yrs **TS:1252 LS:915 LT:\$293390**

Trainer:A.D.Peace

Paulsborolntrepid Pearl
BLACK & RED CHECKS, BLACK SLEEVES
WON (FT3) 1940m MS MOONEE VLLY 03 APR 5/4FAV (1.58.9) (4M, HFHD)
11th (FT7) 2100m MS ALBION PK 17 APR 4/1 BLOSSOM LADY NZ (1.56.9) (53.5M)
8th (FT10) 1609m MS ALBION PK 21 APR 12/1 FRANCO TIGER (1.56.1) (14M)**8 BOWRAL BOY NZ Ft (VIC) TED DEMMLER**L D Mckinnon, G C Mckinnon, R Shepherd, Est Late P Shepherd
Bay g 5yrs **TS:21410 LS:1554 LT:\$234405**

Trainer:T.E.Demmler

New York Motoring/Ventress
ORANGE, BLACK DIAMOND, WHITE SLEEVES
3rd (FT4) 2840m SS MOONEE VLLY 06 MAR 3 MASTER MUSICIAN NZ (2.02.8) (1.5M, 7.5)
10th (FT5) 2100m MS ALBION PK 17 APR 16/1 BLOSSOM LADY NZ (1.56.9) (37.5M)
10th (FT7) 1609m MS ALBION PK 21 APR 125/1 FRANCO TIGER (1.56.1) (17M)**9 WESTBURN GRANT Ft (NSW) VIC FROST**B J Breen, C M Breen, V W Frost, M Frost
Bay h 7yrs **TS:723 LS:1455 LT:\$2065516**

Trainer:V.W.Frost

Land Grant/Westburn Vue
WHITE, SYDNEY 2000 BID LOGO
WON (FT6) 1609m MS HAROLD PK 19 MAR 1/3 (1.57.3) (5M, HFHD)
3rd (FT10) 2100m MS ALBION PK 17 APR 3/1 BLOSSOM LADY NZ (1.56.9) (5.5M, NS)
WON (FT6) 1609m MS ALBION PK 21 APR 4/1 (1.57.5) (1/2 HD, 2M)**10 MASTER MUSICIAN NZ Ft (NZ) ROBERT DUNN**R J Dunn, K L McDonald, E C Stork
Bay g 5yrs **TS:1566 LS:1524 LT:\$1229762**

Trainer:R.J.Dunn

New York Motoring/Petra Del
BLACK, RED, WHITE ARMBANDS & DIAMONDS
WON (4013) 2840m SS MOONEE VLLY 06 MAR FAV (2.02.8) (1.5M, 7.5M)
2nd (FT7) 2100m MS ALBION PK 17 APR 4/7 LEVEL ADVICE (1.58.0) (5m, 5m)
2nd (FT5) 1609m MS ALBION PK 21 APR 5/4 CHRISTOPHER VANCE NZ (1.54.6) (LG NK, NS)**11 FRANCO TIGER Ft (VIC) BRIAN GATH**E J Anderson, H M Anderson
Bay g 7yrs **TS:19105 LS:24611 LT:\$862477**

Trainer:G.N.Tippert

Bo Scots Blue Chip/Tempest Tiger
WHITE, BLUE CIRCLE "A" & SLEEVES
0th (FT7) 2380m MS MOONEE VLLY 27 FEB 6 MASTER MUSICIAN NZ (1.56.7) (PU) PU
5th (FT12) 2100m MS ALBION PK 17 APR 8/1 LEVEL ADVICE (1.58.0) (11M)
WON (FT2) 1609m MS ALBION PK 21 APR 5/4 (1.56.1) (3.5M, NS)**COMMENTS TO RACE SEVEN**

1. BAND MAGIC (NSW): Trailed leader here Wednesday more suitable 1609m race when 3rd (2m) Westburn Grant slowest 1:57.5 heat after 36m 9th Blossom Lady 2100m MS 1:56.9 heat (wet track). Need luck.

2. VALLEY CHAMP (WA): Failed to fire in 2 heat runs and unlikely to bother these. Failed to beat one home at 150-1 in Christopher Vance's fastest 1:54.6 heat Wednesday after 8th Blossom Lady 2100m MS heat.

3. ANVIL LAD (NZ): Handy efforts both heat runs. Started 100-1 plugging 6th (22m) Blossom Lady 2100m MS 1:56.9 heat (wet tk) before 6th (9m) Westburn Grant 1:57.5 heat Wednesday. Gives the impression 2600m will suit.

4. TWO UNDER (NZ): Strong New Zealand stayer, parked out from bell here Wednesday game 8m 5th Christopher Vance fastest 1:54.6 heat after even 32m 5th Jack Morris 2100m MS 1:55.7 heat. 2600m suits and worth following.

5. WEONA WARRIOR (NSW): Raced fairly in both heats, latest 4th (6m) Christopher Vance fastest 1:54.6 heat here Wednesday after 5th (21m) Blossom Lady 2100m MS 1:56.9 heat (wet tk) last Saturday. Not without a place chance.

6. ADMIRAL CHIMES (NSW): Outclassed, started 200-1 9th (17m) Franco Tiger 1:56.1 heat Wednesday after 8th Level Advice 2100m MS last Saturday.

7. DARK PAUL (VIC): Has disappointed in both heat runs and it's impossible to recommend him on his 14m 8th Franco Tiger 1:56.1 heat Wednesday and 54m away in Blossom Lady's 2100m MS heat last Saturday on wet track.

8. BOWRAL BOY (VIC): Widely drawn and not competitive in top-grade racing. Started 125-1, 17m away in Franco Tiger's 1:56.1 heat Wednesday after well beaten in Blossom Lady's heat.

9. WESTBURN GRANT (NSW): Champion and entered Inter Dom calculations with his 1:57.5 heat win Wednesday, raced without cover. This is not as suitable a race but Westburn Grant can never be dismissed.

10. MASTER MUSICIAN (NZ): Top NZ stayer and this looks his race after two heat placings, latest long nk 2nd Christopher Vance fastest 1:54.6 heat Wednesday after 5m 2nd Level Advice 2100m MS 1:58 heat. 2600m is ideal.

11. FRANCO TIGER (VIC): Great campaigner but runs his best races in front. Led, gate 2, 1:56.1 heat win Wednesday. Same draw 11m 5th Level Advice 2100m MS heat last Saturday. Place.

Well, they are at it again:
The Seymour Group

is proudly sponsoring

**THE JUNIOR
INTERDOMINION**

When?

1st May 1993

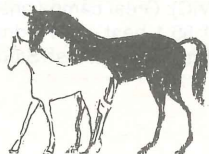
The Place?

Albion Park Paceway

A Shetland and a Pony Final will be held. Great prizes of Regal Sulkies from Jim Walsh in Sydney, locally made Rocket Harness from Marburg, Embroidered Rugs, Sashes and distinctive Queensland Trophies can be won by competitors from all over Australia.

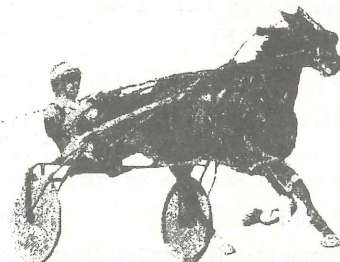
The Sub-Committee of the Junior Interdominion express their sincere thanks to Kevin Seymour for his most generous support by THE SEYMOUR GROUP.

Without your support, our task would indeed be a difficult one.



 **LOSCAM**
PALLET HIRE

**IS PROUD TO BE
A SPONSOR OF THE**



INTER DOMINION
PACING CHAMPIONSHIP
1993

LOSCAM

1717 Ipswich Road,
Rocklea, QLD.
Telephone: 277 9166
Fax: 2741404

RACE

8

10.10 p.m. MOBILE START 1609m

LOSCAM BINS STAKES

Of \$5,114 — winner \$2980; second \$900; third \$500; fourth \$250; fifth \$120; sixth to last \$52. Qualifying 'A' * Non Preferential Draw. Class record: Speed King 1:56.1 — 10/12/88.

SELECTIONS: VALRO IDOL 1, Top Lover 2, Jay Jays Rebel 3.

SADDLE CLOTHS — LIGHT BLUE

1 ARAFURA NZ Ft

T M Griffiths
Bay g 5yrs TS:1223 LS:611 LT:\$20888

Smooth Fella/Krina Bella
RED, BLACK STARS
11th (FT5) 1609m MS ALBION PK 10 APR 16/1 MANGO GIRL (1.59.5) (38M)
WON (FT7) 2030m MS TWEED HDS 14 APR 4/1 (2.05.1) (3.5M, 16M)
2nd (FT6) 2030m MS TWEED HDS 21 APR 5/2 LAND PROFIT (2.00.3) (HD, 5M)

• ARAFURA: Failed only AP run but this suits; place.

JOHN LIVINGSTONE

Trainer: J.A. Livingstone

2 TOP LOVER NZ Ft

D Hill, B V Mckay
Bay g 5yrs TS:2245 LS:1414 LT:\$17028

Top Performer/Miss Monvee
BLACK, YELLOW MALTESE CROSS, WHITE HOOPED SLEEVES
5th (FT6) 1609m MS GOLD COAST 30 MAR 5/2 JAY JAYS REBEL (1.59.3) (7.5M)
4th (FT4) 1609m MS ALBION PK 03 APR 7/2 TRUST AGNES (1.59.1) (7.5M)
5th (FT2) 2060m MS TOOWOOMBA 08 APR 4/1 TRANSPRENEUR (2.04.1) (10M)

• TOP LOVER: Smart beginner, suited alley and mile; eachway.

CHARLIE CINI

Trainer: S.J. Cini

3 BLAZING IN Ft

W Kitching, G Alati
Brown g 7yrs TS:35210 LS:3238 LT:\$28301

Kaipuke Hanover/All Blaze
GREEN & GOLD STRIPES, GOLD YOKE & SLEEVES
2nd (FT4) 1609m MS ALBION PK 20 MAR 5/4 IDEAL TEL (2.00.4) (2M, 6M)
8th (FT1) 2100m MS ALBION PK 27 MAR 6/1 KILBANK CRAIG NZ (2.02.0) (32M)
7th (FT7) 1695m SS ROCKLEA 17 APR 6/1 PAPPARELLI (2.08.8) (12.5M)

• BLAZING IN: Needs to improve on past 2 runs.

DARREL GRAHAM

Trainer: D.W. Graham

4 VALRO IDOL Ft

I J Goos, C A Goos
Bay g 4yrs TS:2467 LS:1645 LT:\$25459

Romeo Allegro/Valro Girl
BROWN, LIGHT BLUE SLEEVES
3rd (FT7) 1609m MS ALBION PK 03 APR 33/1 SILAS MARINER (1.57.7) (14M, LG HD)
7th (FT10) 2060m MS TOOWOOMBA 08 APR 7/2 DIXIELAND JAZZ (2.03.1) (30M)
WON (FT2) 2100m MS ALBION PK 21 APR 5/2 (2.03.0) (5M, 4M)

• VALRO IDOL: Top chance on AP win Wednesday; racing well AP.

SCRATCHED

Trainer: D.M. Stokes

5 WHIZDOM TOOTH Ft

G R Dawson, D Williamson
Bay g 7yrs TS:402 LS:1611 LT:\$25242

Armbo Whiz/Real Value
DARK BLUE, WHITE SLEEVES, DARK BLUE DIAMONDS
6th (FT8) 2100m MS REDCLIFFE 26 MAR 6/1 LACHLAN BEAR (2.03.3) (20M)
0th (FT9) 2100m MS ALBION PK 17 APR 40/1 SON OF GLORY (2.02.5)
2nd (FT5) 2100m MS ALBION PK 21 APR 3/1 STAR CONTENDER (2.02.3) (1/2 NK, 8M)

• WHIZDOM TOOTH: Every chance easier race Wednesday.

GEOFF DAWSON

Trainer: G.J. Dawson

8

6 JAY JAYS REBEL Ft

C O Beadman, C J Beadman
Bay/brown h 4yrs TS:1113 LS:2087 LT:\$56866

J J's Pennant/Second River Lass
PINK
WON (FT7) 1609m MS GOLD COAST 30 MAR 10/1 (1.59.3) (1/2 HD, 3.5M)
2nd (FT9) 1609m MS ALBION PK 03 APR 10/1 TRUST AGNES (1.59.1) (5.5M, LG NK)
5th (FT4) 2100m MS ALBION PK 17 APR 25/1 FURY'S FINETO (2.01.7) (24M)

• JAY JAYS REBEL: Easier than latest 5th; previous form strong.

NATHAN POSTLETHWAITE

Trainer: N.J. Postlethwaite

7 EASTERN HANOVER Ft

N Hayes
Bay g 6yrs TS:1024 LS:1112 LT:\$27706

Eastern Skipper/Bonda Hanover
BROWN, WHITE SASH
7th (FT11) 2100m MS IPSWICH 22 MAR 7/1 LYNWOOD GEM NZ (2.03.1) (19M)
3rd (FT1) 1609m MS ALBION PK 10 APR 11/1 MANGO GIRL (1.59.5) (3.5M, 1.5M)
WON (FT10) 1609m MS TOOWOOMBA 15 APR 8/1 (2.05.0) (LG NK, 3M)

• EASTERN HANOVER: Early speed and racing OK here and provincials.

MAX TOWNS

Trainer: M.A. Towns

8 FINE TIME Ft

T Price, K Price
Chestnut h 5yrs TS:1123 LS:1536 LT:\$41215

Chip Off The Block/Waimea
BLACK, RED V & STRIPED SLEEVES
2nd (FT4) 1609m MS ALBION PK 10 APR 7/2 MANGO GIRL (1.59.5) (3.5M, 1.5M)
WON (FT6) 2100m MS GOLD COAST 13 APR 9/4 (2.02.0) (2.5M, 8M)
4th (FT8) 2100m MS ALBION PK 21 APR 7/2 VALRO IDOL (2.03.0) (12M)

• FINE TIME: Average effort from same draw Wednesday.

IAN MCMAHON

Trainer: S. Hunter

9 CELEBRATION MISS Ft

A Corbett
Brown m 4yrs TS:2035 LS:3257 LT:\$20854

Champagne Happy/Sandy Bow
BLUE, ORANGE SHAMROCK
5th (FT8) 2100m MS WAGGA 06 APR 5 WINNING EMBRACE (2.03.3) (4M)
WON (FT3) 2300m MS REDCLIFFE 16 APR 6/1 (2.07.7) (7M, HD)
3rd (FT6) 1609m MS ALBION PK 21 APR 8/1 MAJESTIC DON (1.59.8) (HD, 5.5M)

• CELEBRATION MISS: Need luck this draw; fair 3rd Wednesday.

RAY TURNER

Trainer: R.N. Turner

10 SUNSET LIQUER Ft

R H Pointer
Chestnut m 4yrs TS:1948 LS:2575 LT:\$43245

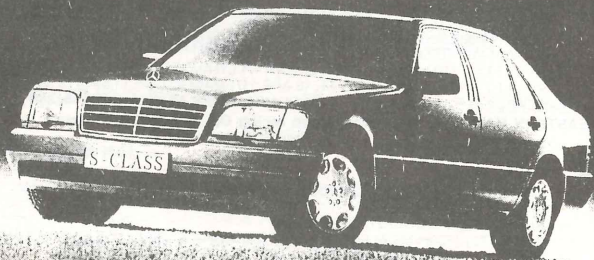
Land Grant/Pina Colada
RED, PURPLE CROSSED SASHES, YELLOW SLEEVES, PURPLE CAP
3rd (FT5) 1609m MS ALBION PK 03 APR 5/1 MANGO GIRL (1.58.6) (10M, 1.5M)
4th (FT12) 1609m MS ALBION PK 10 APR 10/1 MANGO GIRL (1.59.5) (6M)
3rd (FT7) 2100m MS ALBION PK 21 APR 3/1 VALRO IDOL (2.03.0) (5M, 4M)

• SUNSET LIQUER: Handy stayer and reliable; back eachway.

GRAEME BOWYER

Trainer: A.S. Rolfe

The best saloon
the world has ever seen.



The best reviews
the world has ever seen.

"Mercedes has redefined the luxury car in one assertive quantum leap. We are in no doubt as to the identity of the best car in the world. This car is the most accomplished ever made"

PETER ROBINSON, WHEELS.



Mercedes-Benz

Engineered like no other car.

MB0397

RACE

9

10.40 p.m. MOBILE START 1609m

MERCEDES-BENZ 3YO STAKES

Of \$4,614 — winner \$2630; second \$800; third \$450; fourth \$250; fifth \$120; sixth to last \$52. For 3 year old pacers * Preferential Draw on Metro Age Assessment. Class record: Nero's Jay 1:55.5 — 4/1/89.

SELECTIONS: MAKIN IT EASY 1, Just Try Him 2, Junes Babe 3.

SADDLE CLOTHS — GREEN

1 DERRINGER Ft

TOM MCDONALD

Solid Earth Pty Ltd
Bay/brown c 3yrs TS:1864 LS:211 LT:\$17763
McKinzie Almahurst UsaOur Lady Delwin
RED, WHITE SASH, BLUE SLEEVES

Trainer:T.H.McDonald

4th (FT10) 2100m MS ALBION PK 27 MAR 9/4 HELENSVALE FELLA (2.01.0) (11M)
9th (FT3) 2100m MS ALBION PK 03 APR 4/6 JUST TRY HIM (2.01.2) (29M)
4th (FT9) 2100m MS ALBION PK 21 APR 12/1 CAZNA (2.00.1) (22.5M)

• DERRINGER: Hard to have on Wednesday's effort.

2 MAKIN IT EASY Ft

NATHAN POSTLETHWAITE

D J Lyon, J D Lyon, C D Lyon
Bay c 3yrs TS:915 LS:14103 LT:\$55938
Vanston HanoverBye Bye Bronzie
PINK

Trainer:N.J.Postlethwaite

2nd (FT5) 1800m MS REDCLIFFE 26 MAR 5/2 REGAL PRINCE (2.06.1) (8M,2M)
2nd (FT6) 1609m MS ALBION PK 10 APR 4/1 LAST COUNT (1.59.1) (3.5M,7M)
3rd (FT1) 1609m MS ALBION PK 17 APR 11/4 LAST COUNT (1.59.6) (1.5M,4M)

• MAKIN IT EASY: No luck lately; drawn to win tonight.

3 BEAUS DREAM Ft

ROBERT MARTIN

A Wilson
Brown f 3yrs TS:401 LT:\$282
Tyrolea DancerRomeo's Doll

Trainer:W.J.Daw

DARK BLUE, GOLD CROSSED SASHES & SLEEVES, DARK BLUE ARMBANDS
4th (FT3) 2100m MS GOLD COAST 06 APR 5/2 JAMIE MALANEY NZ (2.00.6) (14M)
3rd (FT1) 2100m SS GOLD COAST 13 APR 7/4 ARFASIXPENCE (2.09.1) (2M,2M)
8th (FT6) 1609m MS GOLD COAST 20 APR 6/4 LAWLESS MAN (2.02.7) (13.5M)

• BEAUS DREAM: Capable maiden but wait for an easier race.

4 JUNES BABE Ft

GRANT DIXON

J L Fyfe
Chestnut g 3yrs TS:1343 LS:1033 LT:\$28333
What's NextMerron Gail

Trainer:W.F.Dixon

BLACK & WHITE CHECKS, WHITE SLEEVES & CAP
4th (FT10) 1609m MS GOLD COAST 06 APR 7/2 JUNGLE GEORGE (1.59.2) (9M)
2nd (FT7) 2100m MS GOLD COAST 13 APR 20/1 GOLDEN SOVEREIGN (2.00.3) (1/2 NK,12M)
WON (FT6) 2100m MS ALBION PK 21 APR 11/4 (2.02.0) (2M,13M)

• JUNES BABE: Narrow winner Wednesday; chance again.

9

5 SHES BLUSHING Ft

CRAIG MCKINNIS

S P Jennings

Brown f 3yrs TS:1313 LS:1337 LT:\$33451

Able Bye ByeBlack Garter

YELLOW, BLACK BAND

10th (FT6) 2060m MS TOOWOOMBA 08 APR 5/1 SUNRISE LIGHT (2.07.9) (35M)

5th (FT6) 1609m MS ALBION PK 10 APR 50/1 IMA DREAM (2.00.8) (27)

2nd (FT7) 1609m MS ALBION PK 17 APR 50/1 TAXES PEARL (2.00.9) (SH HD.4M)

• SHES BLUSHING: Placed in easier company last Saturday.

6 FRENCH LACE Ft

EDWARD BAILEY

R W Graham, M T Graham, E S Bailey

Bay/brown f 3yrs TS:1925 LS:1303 LT:\$7741

Vanston HanoverShinambro

WHITE, GREEN MALTESE CROSS

4th (FT5) 1609m MS ALBION PK 10 APR 11/2 MAI LING (2.02.7) (15M)

7th (FT6) 1609m MS ALBION PK 17 APR 25/1 TAXES PEARL (2.00.9) (11M)

9th (FT4) 2100m MS ALBION PK 21 APR 50/1 CAZNA (2.00.1) (39.5M)

• FRENCH LACE: Not fancied.

7 LAND OF GIANTS Ft

JOHN MCMULLEN

J C McMullen

Brown/black g 3yrs TS:2075 LS:1658 LT:\$39983

Land GrantLady Atashy

RED, WHITE SASH

2nd (FT10) 1609m MS ALBION PK 10 APR 20/1 JUST TRY HIM (1.59.8) (1/2 NK.4.5M)

4th (FT4) 1609m MS ALBION PK 17 APR 7/1 LAST COUNT (1.59.6) (7.5M)

2nd (FT9) 2100m MS ALBION PK 21 APR 20/1 JUNES BABE (2.02.0) (2M.13M)

• LAND OF GIANTS: Battled on well AP 2nd Wednesday; likes 1609m.

8 VANASSIC Ft

SCRATCHED

L A Wall

Bay c 3yrs TS:1214 LS:1312 LT:\$6021

Vanston HanoverJurassic

BLACK, GOLD SPOTS & SLEEVES

2nd (FT8) 2100m MS GOLD COAST 06 APR 10/1 JAMIE MALANEY NZ (2.00.6) (8M.4M)

5th (FT7) 2100m SS GOLD COAST 13 APR 2/1 ARFASIXPENCE (2.09.1) (10.5M)

5th (FT1) 2100m MS ALBION PK 21 APR 20/1 JUNES BABE (2.02.0) (19.5M)

• VANASSIC: Weak run Wednesday from a better draw.

9 COCO RIDGE Ft

KUNDE S W

I J Goos, R M Kirby

Bay c 3yrs TS:1143 LS:623 LT:\$14993

April BayYallabee Sarann

BROWN, LIGHT BLUE SLEEVES

3rd (FT6) 1609m MS ALBION PK 10 APR 8/1 JUST TRY HIM (1.59.8) (1/2 NK.4.5M)

8th (FT9) 1609m MS ALBION PK 17 APR 20/1 LAST COUNT (1.59.6) (23.5M)

6th (FT8) 2100m MS ALBION PK 21 APR 16/1 CAZNA (2.00.1) (28.5M)

Trainer:D.M.Stokes

• COCO RIDGE: Worked too hard Wednesday; not well drawn again.

10 MAILING Ft

DARYL CRONE

G B Dowsett, J M Crone

Bay f 3yrs TS:1254 LS:722 LT:\$21680

Vanston HanoverMilford Jodie

DARK BLUE, WHITE SQUARE & STRIPED SLEEVES

WON (FT2) 1800m MS REDCLIFFE 26 MAR 1/2 (2.04.2) (9M.3M)

WON (FT4) 1609m MS ALBION PK 10 APR 2/5 (2.02.7) (4M.5M)

5th (FT8) 1609m MS ALBION PK 17 APR 7/1 TAXES PEARL (2.00.9) (6.5M)

Trainer:D.G.Crone

• MAI LING: Best suited against own sex.

11 JUST TRY HIM Ft

ALAN DONOHOE

B C Tippet, L M Donohoe

Brown c 3yrs TS:1273 LS:521 LT:\$24150

Vanston HanoverBonny Wee An

RED, WHITE CROSSED SASHES, DARK BLUE SLEEVES

WON (FT8) 2100m MS ALBION PK 03 APR 13/2 (2.01.2) (HD.4.5M)

WON (FT2) 1609m MS ALBION PK 10 APR 4/7 (1.59.8) (1/2 NK.4.5M)

2nd (FT8) 1609m MS ALBION PK 17 APR 9/4 LAST COUNT (1.59.6) (1.5M.4M)

Trainer:P.J.Donohoe

44 • JUST TRY HIM: Strong-stayer and in-form; go well.

9

12 STRATA (ODM) 1Em Ft

GARY VERNON

R C Turner, A J Belas

Bay c 3yrs TS:1002 LT:\$510

Land GrantPrincess Lyla

WHITE, RED SASH & ARMBANDS

10th (FT10) 1800m MS REDCLIFFE 26 MAR 40/1 HAMILTON DRIVE (2.03.6) (39M)

3rd (FT4) 2100m MS GOLD COAST 06 APR 9/2 JAMIE MALANEY NZ (2.00.6) (8M.4M)

8th (FT4) 2100m MS REDCLIFFE 16 APR 7/2 JAMIE MALANEY NZ (2.06.2) (30M)

Trainer:D.L.Russell

• STRATA: Unreliable maiden; not here.

13 DAY AND KNIGHT NZ Ft

SCRATCHED

T Price, K Price

Brown g 3yrs TS:1041 LT:\$8235

Tuapeka Knight NzDay's Destiny

BLACK, RED V & STRIPED SLEEVES

WON (FT3) 2060m MS TOOWOOMBA 08 APR 5/4 (2.05.7) (1M.NS)

7th (FT10) 2060m MS TOOWOOMBA 15 APR 8/1 BULL FIGHTER NZ (2.04.6) (8M)

0th (FT1) 2100m SS GOLD COAST 20 APR 9/2 GOLDEN BOOTS (2.04.2)

Trainer:S.Hunter

• DAY AND KNIGHT: Set too hard a task from this draw.

1st 2nd 3rd 4th Time Margins

NATIONAL AUSTRALIA BANK DRIVERS
PREMIERSHIP 1992-93 as at 20.4.93

| | 1st | 2nd | 3rd |
|----------------|-----|-----|-----|
| A.M. Donohoe | 38 | 20 | 27 |
| G.W. Bowyer | 38 | 10 | 6 |
| P.J. Greig | 21 | 8 | 10 |
| I.N. McMahon | 12 | 21 | 13 |
| M.A. Dux | 11 | 9 | 8 |
| C.T. Cini | 9 | 10 | 15 |
| N.W. Scott | 8 | 15 | 2 |
| D.J. Stainkey | 7 | 6 | 5 |
| D.J. Alexander | 7 | 7 | 1 |
| V.J. Rasmussen | 6 | 7 | 12 |

WILLWIN HARNESS RACING SUPPLIES
TRAINERS PREMIERSHIP 1992-93 as at 20.4.93

| | 1st | 2nd | 3rd |
|---------------|-----|-----|-----|
| J. Bowyer | 37 | 10 | 6 |
| A.M. Donohoe | 20 | 11 | 19 |
| S. Hunter | 19 | 25 | 23 |
| M.A. Dux | 14 | 10 | 13 |
| S.J. Kann | 12 | 3 | 5 |
| S.J. Cini | 9 | 10 | 14 |
| P.J. Donohoe | 9 | 8 | 1 |
| D.J. Stainkey | 6 | 3 | 1 |
| R.W. Cross | 5 | 6 | 4 |
| B.J. Connelly | 5 | 1 | 3 |



Vincent Silvestro is 'HOT TO TROT'

THE ORIGINAL
**HOWARD
 & SONS**
 PYROTECHNICS

The Original Howard & Sons Pyrotechnics, an Australian fireworks manufacturer and exporter to USA — Disney Enterprises and now Euro Disney in France to name a few. Winner of the Gold Award at the Benson & Hedges Symphony of Fire International Fireworks Competition in Vancouver, Canada, 1991.

Contact Les Howard, Windsor Road, Box Hill, NSW 2765

Phone (02) 627 1694 Fax (02) 627 4055

Vincent's colours are supplied by LUCKY COLOURS.

Phone Barbara McDonald on (07) 268 7704



INTER DOMINION
 • PACING CHAMPIONSHIP •

1993

**COMMEMORATIVE ENVELOPE
 AND FIXED DATE POSTMARKER**

A Commemorative Envelope has been produced to mark the 1993 Conrad Jupiters Inter Dominion Championship. A commemorative fixed date postmarker is also available.

The envelope is offered with a 45c stamp affixed and cancelled with the commemorative postmarker.

Covers sell for 25c blank — serviced covers 70c.

*ORDERS SHOULD BE FORWARDED TO
 THE POSTAL MANAGER,
 ALBION, QLD. 4010*

**Inter Dominion Cover (blank) . . . 25c
 Inter Dominion Postmarked Cover 70c**

Great shopping 7 days a week

and much more in Brisbane's City Heart.

YOU CAN WALK easily and safely to Brisbane's famous QUEEN STREET MALL from all downtown world class hotels . . .

YOU CAN SHOP in three magnificent shopping centres, historic arcades, exciting boutiques, wonderful gift shops with many providing a DUTY FREE service . . .

YOU CAN DINE Alfresco style or in one of our finest restaurants, have a beer in a pub or catch a late release movie . . .

YOU CAN ENJOY DAILY ENTERTAINMENT on one of the Mall Stages, or meet a colourful busker . . .

VISIT THE TOURIST INFORMATION CENTRE ON THE MALL where one of our Courtesy Hostesses will guide you to the right destination . . .

ALL OF THIS AND MORE SEVEN DAYS EACH WEEK — MONDAY TO SUNDAY — when we happily make you most welcome . . . ENJOY YOUR STAY . . .

Brisbane's
QUEEN STREET
MALL

Saturday, Sunday, Everyday

Brisbane



AUSTRALIA'S BRILLIANT YOUNG CITY

**SHOPPING HOURS: MONDAY-THURSDAY 9.00am-5.30pm ;
FRIDAY 9.00am-9.00pm ; SATURDAY 9.00am-4.00pm ;
SUNDAY 10.30am-4.00pm**

RACE

10

11.10 p.m. MOBILE START 2100m

BRISBANE'S QUEEN STREET MALL STAKES

Of \$5,114 — winner \$2980; second \$900; third \$500; fourth \$250; fifth \$120; sixth to last \$52. For pacers assessed 21 Local Assessment only * Non Preferential Draw. Class record: Shuttle Drive 2:33.7 (1:57.8) — 9/1/93.

SELECTIONS: DOWN HILL 1, Lord Carrington 2, Kilbank Craig 3.

SADDLE CLOTHS — BROWN

1 KILBANK CRAIG NZ Ft

Solid Earth Pty Ltd
Bay g 6yrs **TS:1282 LS:2316 LT:\$47349**
Taurus Chief/Kilbank Kerri
LIGHT BLUE, ROYAL BLUE & WHITE SASH
WON (FT8) 2100m MS ALBION PK 27 MAR 4/6 (2.02.0) (2M,16M)
WON (FT5) 2100m MS GOLD COAST 30 MAR 1/12 (2.00.9) (10M,13M)
WON (FT8) 1609m MS ALBION PK 17 APR 4/5 (2.00.8) (7M,2M)

GRAEME BOWYER

Trainer:J.Bowyer

• KILBANK CRAIG: Form-runner with top chance of making it 4 wins.

2 LORD CARRINGTON Ft

R G GonChee
Bay g 8yrs **TS:1933 LS:2426 LT:\$46613**
What A Fella/Direct Silk
BLACK & BLUE STRIPES, RED SLEEVES, WHITE CAP
7th (FT9) 1609m MS ALBION PK 06 MAR 10/1 WESTBURN STAR (1.59.3) (8.5M)
7th (FT11) 2100m MS ALBION PK 13 MAR 8/1 UNION MONARCH (2.01.5) (11M)
7th (FT7) 2100m MS ALBION PK 21 APR 7/1 RADIO ACTIVE NZ (1.59.0) (33M)

RAY GONCHEE

Trainer:R.G.GonChee

• LORD CARRINGTON: Suited this draw; appeals eachway.

3 MOTORING MATT Ft

L S Schmidt
Bay h 7yrs **TS:1726 LS:402 LT:\$26146**
Matrix Hanover/Cool Charm
GREEN, WHITE STAR & STRIPED SLEEVES
8th (FT7) 1609m MS ALBION PK 06 MAR 12/1 WESTBURN STAR (1.59.3) (9M)
4th (FT8) 2100m MS ALBION PK 13 MAR 9/1 UNION MONARCH (2.01.5) (9.5M)
4th (FT6) 1609m MS ALBION PK 17 APR 8/1 UNION MONARCH (1.59.1) (8.5M)

PETER GREIG

Trainer:L.S.Schmidt

• MOTORING MATT: Occasional AP place chance.

4 ACES TO SPARE Ft

J J Scott, B K Scott, L Duff
Bay h 5yrs **TS:923 LS:27813 LT:\$32560**
Timely Ace/Spare Fragrance
MAROON, GOLD DIAMOND
11th (FT4) 2100m MS ALBION PK 02 JAN 7/2 LIKELY LAD NZ (2.00.4) (38M)
3rd (FT2) 2100m MS ALBION PK 09 JAN 16/1 SHUTTLE DRIVE (1.57.8) (11M,4.5M)
6th (FT5) 1609m MS ALBION PK 17 APR 16/1 UNION MONARCH (1.59.1) (14.5M)

DARREL GRAHAM

Trainer:J.J.Scott

• ACES TO SPARE: Fitter after AP 6th last Saturday; place.

10

5 KABELHA LASS Ft

SHARON MCCALL

O Hayes, L P Leis, P T Colley, C R Williams, M Dimou, R S Williams.....
 Bay m 5yrs TS:1642 LS:2454 LT:\$23852
 Koala King Childwood Lass
 BLUE, RED SLEEVES, WHITE CAP
 10th (FT9) 2100m MS ALBION PK 27 MAR 20/1 OUR CURT HANOVER (2.02.1) (14.5M)
 3rd (FT9) 2100m MS ALBION PK 10 APR 25/1 TASKO NZ (1.59.6) (8M, 3.5M)
 7th (FT1) 1609m MS ALBION PK 17 APR 12/1 UNION MONARCH (1.59.1) (15.5M)

* KABELHA LASS: Unsited last Saturday; go well now at 2100m.

6 TOURA Ft

VIC RASMUSSEN

T D Playford
 Black h 5yrs TS:1313 LS:24710 LT:\$57150
 Mannart Full Speed Gloaming Glow
 PINK & GREY QUARTERS, PINK ARMBANDS
 4th (FT6) 2100m MS ALBION PK 27 MAR 7/1 OUR CURT HANOVER (2.02.1) (4.5M)
 3rd (FT3) 2100m MS ALBION PK 03 APR 13/8 KIMBOLTON JANE (2.02.6) (1/2 NK, 1/2 HD)
 8th (FT4) 1609m MS ALBION PK 17 APR 9/2 UNION MONARCH (1.59.1) (16.5M)

* TOURA: Failed to run on latest AP 8th; tested on that.

7 ALBA TOFF NZ 2Em Ft

CHARLIE CINI

J R Geiger, A U Geiger, L C Cini, M A Cini
 Bay g 6yrs TS:38313 LS:34811 LT:\$52439
 Alba Time Sheridan Lady
 BLACK, RED MALTESE CROSS, WHITE SLEEVES, RED CAP
 2nd (FT6) 2100m MS ALBION PK 10 APR 25/1 TASKO NZ (1.59.6) (8M, 3.5M)
 4th (FT5) 2400m MS TWEED HDS 14 APR 3/1 KING LEO (2.02.8) (9M)
 12th (FT7) 1609m MS ALBION PK 17 APR 16/1 UNION MONARCH (1.59.1) (20M)

* ALBA TOFF: Mixes his form but goest best at 2100m.

8 KIMBOLTON JANE Ft

JOHN CREMIN

P L Colvin, B M Colvin
 Bay m 5yrs TS:1322 LS:28112 LT:\$47342
 Silver Dollar Ambro Averil
 GREEN, WHITE YOKE & BRACES
 WON (FT6) 2100m MS ALBION PK 03 APR 11/2 (2.02.6) (1/2 NK, 1/2 HD)
 5th (FT1) 1609m MS TWEED HDS 07 APR 9/2 ALBA TOFF NZ (2.00.5) (8.5M)
 8th (FT2) 3100m MS GOLD COAST 20 APR 8/1 TASKO NZ (2.04.4) (DIST)

* KIMBOLTON JANE: Capable staying mare; place.

9 VANSTON ADIOS Ft

MICHAEL DUX

W Treuer, R Treuer, L Massey, J J Dignam, K J Robinson
 Brown h 4yrs TS:1345 LS:1164 LT:\$56150
 Vanston Hanover Sue Adios (Nz)
 WHITE, LIGHT BLUE DIAMOND & SLEEVES
 WON (FT2) 1609m MS GOLD COAST 23 MAR 2/5 (1.58.4) (3.5M, 4M)
 6th (FT9) 1609m MS ALBION PK 03 APR 11/2 SILAS MARINER (1.57.7) (28M)
 3rd (FT8) 1609m MS ALBION PK 17 APR 3/1 UNION MONARCH (1.59.1) (5M, 3.5M)

* VANSTON ADIOS: Faded mile last Saturday; same draw now.

10 LOTS AFELLAS NZ 1Em Ft

BRIAN HANCOCK

A J Mcgrath, J A Mcgrath
 Bay g 6yrs TS:1202 LS:1635 LT:\$29914
 Son Of Afella Exmoot
 ORANGE, BLACK CHECKS, ORANGE SLEEVES
 8th (FT4) 1960m MS HAROLD PK 19 MAR 4 MENZIES ADIOS (2.02.9) (14M)
 6th (FT2) 1609m MS HAROLD PK 06 APR 6/4 CRESTED WAVE (2.00.9) (7M)
 11th (FT2) 1609m MS ALBION PK 17 APR 6/1 UNION MONARCH (1.59.1) (19M)

* LOTS AFELLAS: Couldn't recommend on AP run last Saturday.

11 DIXIELAND JAZZ Ft

TERRY HANCOCK

R M Cross, J E Cairns
 Bay h 6yrs TS:2053 LS:28213 LT:\$48387
 Big Band Sound Gentry's Tradition
 LIGHT BLUE, DARK BLUE MALTESE CROSS
 WON (FT5) 2060m MS TOOWOOMBA 08 APR 1/1 (2.03.1) (9M, 6M)
 5th (FT9) 1609m MS ALBION PK 17 APR 16/1 UNION MONARCH (1.59.1) (14M)
 6th (FT3) 2100m MS ALBION PK 21 APR 13/2 RADIO ACTIVE NZ (1.59.0) (27M)

50 * DIXIELAND JAZZ: Better suited from a front-row draw.

10

12 DOWN HILL Ft

ALAN DONOHOE

R J Sallis
 Bay g 7yrs TS:952 LS:341617LT:\$32322
 Armbro Whiz Dry And Dusty
 BLUE, GOLD DIAMOND
 WON (FT1) 2600m SS ALBION PK 20 MAR 6/1 (2.03.1) (NS, 5.5M)
 WON (105) 2600m SS ALBION PK 03 APR 6/4 (2.02.0) (SH NK, 9M)
 2nd (FT5) 2100m MS ALBION PK 21 APR 5/1 RADIO ACTIVE NZ (1.59.0) (5M, 9M)

* DOWN HILL: Eyecatcher Wednesday; top chance here.

13 ATOMIC VIEW Ft

SCRATCHED

T Price, K Price
 Bay h 6yrs TS:2435 LS:1001 LT:\$34628
 Soky's Atom Quick View
 BLACK, RED V & STRIPED SLEEVES
 11th (FT7) 2100m MS ALBION PK 03 APR 75/1 KIMBOLTON JANE (2.02.6) (17.5M)
 4th (FT9) 2060m MS TOOWOOMBA 08 APR 10/1 DIXIELAND JAZZ (2.03.1) (16M)
 8th (FT2) 2100m MS ALBION PK 21 APR 25/1 RADIO ACTIVE NZ (1.59.0) (64M)

* ATOMIC VIEW: Lost ground Wednesday; no appeal.

14 OUR CURT HANOVER Ft

ALAN DONOHOE

T Price, K Price
 Bay g 6yrs TS:23311 LS:924 LT:\$36305
 Vance Hanover Star Dora
 BLACK, RED V & STRIPED SLEEVES
 WON (FT2) 2100m MS ALBION PK 27 MAR 7/1 (2.02.1) (4M, HD)
 6th (FT4) 2100m MS ALBION PK 10 APR 10/1 TASKO NZ (1.59.6) (15M)
 10th (FT12) 1609m MS ALBION PARK 17 APR 33/1 UNION MONARCH (1.59.1) (18M)

* OUR CURT HANOVER: Needs an easy trip; unsited here.

1st 2nd 3rd 4th Time Margins

Entertainment by

Jazz Swing Rock
& Country

Local, National and
International Artists

Ph: (07) 878 1300
32 Cottesmore St,
Fig Tree Pocket 4069



All types of enter-
tainment, weddings,
corporate functions,
festivities

Pager: (07) 831 6199
Quote No. 1562
Fax: 378 7495

10

***The
Albion Park
Harness Racing Club***

and

***The Inter Dominion
Grand Council***

wish to thank
the following sponsors
for their generous support
of this year's Championship:

- Mercedes-Benz
- Switzerland Insurance
- Loscam Pallet Hire
- City Heart
- Philips
- Wheel & Rims Engineering
- Interforms
- Telecom

**CONRAD
JUPITERS**
GOLD COAST



INTER DOMINION
PACING CHAMPIONSHIP
1993

**1993 INTER DOMINION
PACING CHAMPIONSHIP**

Guaranteed Reserved Seating
Open Air Public Seating still available
from Secretary's Office

FUNCTIONS

Caduceus Club Barrier Draw Luncheon
12.30 pm — Conrad Jupiters Hotel, Gold Coast
Monday 26 April 1993 \$48.00

Inter Dominion Dinner Dance — 6.30 pm
Sheraton Brisbane Hotel Ballroom
Thursday 29 April 1993 \$63.00

For further information:

Phone (07) 262 2577

Fax (07) 262 1885

BOOK EARLY TO AVOID DISAPPOINTMENT

Suspense ADRENALIN Win!



**CONRAD
JUPITERS**

GOLD COAST

OPERATED BY HILTON HOTELS

Broadbeach Island, Gold Coast Highway. Phone: 921 133

HIT THE SPOT



Moonee Valley



TAB TRIFECTA & QUINELLA ALL RACES

1st Race 7.00p.m.

| M1 or better, Standing Start 2380m | | | | |
|------------------------------------|-------------------------------|----|-------------------------------|----|
| 1 864 | Hardline (T Dillon) | ft | 7 167 Lord Greystoke (J Borg) | ft |
| 2 923 | Pops Delight (J O'Sullivan) | ft | 8 532 Karalta Jet (G Lang) | ft |
| 3 959 | Chardonnay (C Alford) | ft | 9 111 Dean Adam (A Peace) | ft |
| 4 334 | Good Pep NZ (D Smith) | ft | | |
| 5 230 | Last Summer (G Lang) | ft | | |
| 6 347 | Times A Marching (A-M Conroy) | ft | | |
| 7 897 | Barossa Baron (B Gath) | ft | | |
| 8 033 | Concentric (P Gath) | ft | | |
| 9 170 | Elmore Fella (J Caldwell) | ft | | |
| 10 517 | Wandanias Speedie (A Chinn) | ft | | |
| 11 093 | Meadowlands Mick (P Gath) | ft | | |

2nd Race 7.30p.m.

| M2, Mobile Start 1940m | | | |
|------------------------|-----------------------------|----|--|
| 1 535 | Fine Glance (D Miles) | ft | |
| 2 342 | Moll Flanders NZ (C Alford) | ft | |
| 3 741 | Gold Lion (A Peace) | ft | |
| 4 486 | Gordon Geko (A Portelli) | ft | |
| 5 060 | Packard (M Peace) | ft | |
| 6 075 | Bombshell NZ (M Burkett) | ft | |
| 7 298 | Star Atom (M Peace) | ft | |
| 8 741 | Zodiac Dancer (G Lang) | ft | |

TAB TREBLE 1st LEG

3rd Race 8.00p.m.

| C3, Mobile Start 2380m | | | |
|------------------------|------------------------------|----|--|
| 1 926 | Manwarra Sunshine (D Miles) | ft | |
| 2 917 | Lotsa Wealth (—) | ft | |
| 3 221 | Skipper Rouge (K Day) | ft | |
| 4 073 | Secret Lover NZ (C Alford) | ft | |
| 5 053 | Happy Connection (D Douglas) | ft | |
| 6 371 | Eumarella Brett (B Alford) | ft | |
| 7 273 | Gipsy Fire (R Thomson) | ft | |
| 8 212 | Blurrark (R Barker) | ft | |
| 9 712 | Joe Lamass (J F Ryan) | ft | |
| 10 681 | Hazard Trader (N Clarke) | ft | |
| 11 313 | Classic Boots (K Brough) | ft | |

4th Race 8.30p.m.

| M0, Mobile Start 1940m | | | |
|------------------------|------------------------------------|----|--|
| 1 918 | Franco Prevail NZ (G Lang) | ft | |
| 2 510 | Strictly Cash (A Mifsud) | ft | |
| 3 117 | Beardless NZ (T Demmler) | ft | |
| 4 228 | Scotch Tim (A Dunn) | ft | |
| 5 481 | Kenny NZ (A Peace) | ft | |
| 6 533 | Meadow Style NZ (S Dove) | ft | |
| 7 245 | Troys Wealth (C Ventura) | ft | |
| 8 011 | Blueberry Prince (B Morton) | ft | |
| 9 340 | Prize Possession NZ (J O'Sullivan) | ft | |
| 10 238 | Ice On Fire (A Brough) | ft | |
| 11 202 | Robbed NZ (K Harrison) | ft | |

TAB TREBLE 2nd LEG TAB DOUBLE 1st LEG

5th Race 9.00 p.m.

| M3, M4 and M5, Mobile Start 1940m | | | |
|-----------------------------------|-----------------------------|----|--|
| 1 647 | Big Bird (N Youngson) | ft | |
| 2 985 | Nicholas Branach (R Conway) | ft | |
| 3 713 | Franco Elect NZ (M Gath) | ft | |
| 4 005 | Palis Pride (S Adams) | ft | |
| 5 233 | Cave Man (A Mifsud) | ft | |
| 6 742 | Strong Don NZ (A Peace) | ft | |

7 167 Lord Greystoke (J Borg) ft

| |
|-------------------------------|
| 8 532 Karalta Jet (G Lang) ft |
| 9 111 Dean Adam (A Peace) ft |

6th Race 9.30p.m.

| TMO or better, Standing Start 2380m | | | |
|-------------------------------------|-------------------------------|----|----------|
| 1 947 | Jack Darby (V Carbone) | ft | |
| 2 075 | Speedy Judge (C Alford) | ft | |
| 3 411 | Mattenandi (J Attard) | ft | |
| 4 054 | Corrans Image (P Ryan) | ft | |
| 5 967 | Southern Land (J Attard) | ft | |
| 6 615 | Dynamic Poplar (N Shinn) | ft | |
| 7 501 | Preneurs Wonder (M Shaw) | ft | |
| 8 119 | Brereton (F Dyer) | ft | ODS ft |
| 9 902 | Sovereign Beau (J Paton) | ft | RODS 10m |
| 10 972 | Supreme Gent (B Payne) | ft | 20m |
| 11 261 | Pauls Future (N Welsh) | ft | 20m |
| 12 040 | Moments Like These (D Norris) | ft | RODS 20m |
| 13 975 | Kwik Kiwi (M Wishart) | ft | 30m |
| 14 241 | Ima Bulldog (K Douglas) | ft | 30m |

TAB TREBLE 3rd LEG TAB DOUBLE 2nd LEG

7th Race 10.00p.m.

| M0, Mobile Start 1940m | | | |
|------------------------|----------------------------|----|--|
| 1 033 | Magic Merchant (C Lang) | ft | |
| 2 313 | Aston Bow (G Dalton) | ft | |
| 3 383 | Jun Jun Fella (B Rogers) | ft | |
| 4 114 | Mister Manwarra (A Brough) | ft | |
| 5 211 | Mundurra (B Alford) | ft | |
| 6 314 | Lydens Law (A Dunn) | ft | |
| 7 632 | Sunday Silence (J McGinty) | ft | |
| 8 281 | Son Of Vanda (G Peace) | ft | |
| 9 121 | Ronzel Dancer (J Lloyd) | ft | |
| 10 152 | Bradadee (M Hayes) | ft | |
| 11 312 | Bindie Langus (B Harpley) | ft | |

8th Race 10.30p.m.

| C2, Mobile Start 2380m | | | |
|------------------------|-------------------------------|----|--|
| 1 922 | Victoria Alipes (A Mifsud) | ft | |
| 2 673 | Lazy Meadow (D Miles) | ft | |
| 3 554 | Halladale (K Clarke) | ft | |
| 4 742 | Balidon (K Wellington) | ft | |
| 5 033 | Son Of Genghis (L Power) | ft | |
| 6 641 | Sea Legs (A Barnes) | ft | |
| 7 111 | The Butler Did It (P Carrafa) | ft | |
| 8 952 | Easy Dollars (A Portelli) | ft | |
| 9 431 | Sparkling Cyanide (—) | ft | |
| 10 014 | Stress Attack (R Thomson) | ft | |
| 11 443 | Fred Basset (I McCallum) | ft | |

9th Race 10.55p.m.

| 3YOs CO or better, Mobile Start 1940m | | | |
|---------------------------------------|-------------------------------|----|--------|
| 1 2 | Spider McCoy (G Hill) | ft | |
| 2 727 | Right As Rain (B Edwards) | ft | |
| 3 951 | Empty Bag (A Portelli) | ft | |
| 4 024 | Tibur Prince (R O'Connell) | ft | |
| 5 333 | Marengo Monarch (—) | ft | |
| 6 016 | Sparkling (M Gath) | ft | |
| 7 542 | Jamyran Prince (D Norris) | ft | |
| 8 351 | Star Buy (J Borg) | ft | |
| 9 261 | Allwoods Chief (G Lang) | ft | |
| 10 511 | Unrumpungee Salute (J F Ryan) | ft | |
| 11 440 | Master Lambton (B Gath) | ft | ODM ft |



Ipswich



TAB TRIFECTA & QUINELLA ALL RACES

1st Race 7.37p.m.

| 5th Grade 512m | |
|----------------|------------------------------|
| 1 | Whirlie Lass A Perry |
| 2 | Woodland Wonder W Edmonds |
| 3 | Koorleah Dancer C Perry |
| 4 | Fearless Danny W Hooper |
| 5 | Mr. Big Stuff B Morris |
| 6 | Oberion M Hanley |
| 7 | King Creeker M Ross |
| 8 | Night Star B Bolin |
| 9 | Star Counsel (Res) T Laplan |
| 10 | Scottish John (Res) L Waldon |

TAB TREBLE 1st LEG 2nd Race 7.57p.m.

| Consolation, 512m | |
|-------------------|----------------------------|
| 1 | Making Mischief R Cook |
| 2 | Mighty Martina S Lewis |
| 3 | Smiling Assassin J Wright |
| 4 | Brutina I Dionysius |
| 5 | Markaboy's Son J Edwards |
| 6 | Cardigan Blue C Pollock |
| 7 | Yo Yo City W Mohr |
| 8 | Tear's Acacia A Zammitt |
| 9 | Felicitacion (Res) C Smith |
| 10 | Real Ghost (Res) R Krauss |

TAB EXTRA DOUBLE 1st LEG 3rd Race 8.17p.m.

| 4th & 5th Grade, 630m | |
|-----------------------|---------------------------------|
| 1 | Witch Fox J Roy |
| 2 | Royal Mystery A Lummbvaara |
| 3 | Picture Khan B Moberley |
| 4 | Just A Kick F Christopher |
| 5 | Fleetfoot Mac G Weller |
| 6 | She's A Picture R Fletcher |
| 7 | Shazee Ablaze J Prout |
| 8 | Surfers Paradise D Ballinger |
| 9 | Fearless Vander (Res) G Francis |
| 10 | Steel Citizen (Res) R Attard |

TAB TREBLE 2nd LEG TAB DOUBLE 1st LEG 4th Race 8.37p.m.

| Best 8 Nominated, 630m | |
|------------------------|-----------------------------|
| 1 | Adamant M Wells |
| 2 | Akubra Court B Sutton |
| 3 | Yes She's Red G Francis |
| 4 | Talent Galore A Zammitt |
| 5 | Steel Mistress R Attard |
| 6 | Banker's Gemble B Mulvihill |
| 7 | Dell's Dancer A Zammitt |
| 8 | Zircon Zip B Kingston |

5th Race 8.57p.m.

| 5th Grade 431m | |
|----------------|-------------------------------|
| 1 | Foster's Go Go J King |
| 2 | Jayandaree King K Forrester |
| 3 | Willy Wagtail B Francis |
| 4 | Werina Supreme N Evans |
| 5 | Noah Winner R Fall |
| 6 | Goes Early R Stephan |
| 7 | Woodland Fox S Davies |
| 8 | She's Impressive B Stubbs |
| 9 | Hidden View (Res) J Jones |
| 10 | Maclean's Hope (Res) M Kirkan |

6th Race 9.17p.m.

| Maiden Final 512m | |
|-------------------|----------------------------|
| 1 | Acacia Abuzz D Dionysius |
| 2 | Star Of Jemma B Tunny |
| 3 | Millie High P Menary |
| 4 | Jessica Rev P Solway |
| 5 | Foxtale L Kederer |
| 6 | Stout Lover V Sorrenson |
| 7 | Graphic Play M Ross |
| 8 | Little Bridget J Schlecht |
| 9 | Queen Of Pat (Res) M Dance |
| 10 | Semibreve (Res) L Muir |

TAB TREBLE 3rd LEG TAB DOUBLE 2nd LEG 7th Race 9.37p.m.

| Final, 512m | |
|-------------|-------------------------------|
| 1 | George's Way B Wolens |
| 2 | Effie Belle K Harradence |
| 3 | Deal Me Out S Bourke |
| 4 | Markaboy's Hope J Edwards |
| 5 | Miss Norma J Pollock |
| 6 | Eira Gwyn E Williamson |
| 7 | Rambuka Rebel A Zammitt |
| 8 | Marry Me Mary D Brett |
| 9 | Tear's Acacia (Res) A Zammitt |
| 10 | Mighty Martina (Res) S Lewis |

TAB EXTRA DOUBLE 2nd LEG 8th Race 10.02p.m.

| Best 8 Nominated plus Reserves, 512m | |
|--------------------------------------|------------------------------|
| 1 | Lucky Ghost R Krause |
| 2 | Bogan Venture S Lewis |
| 3 | Akubra Charm B Sutton |
| 4 | Call Me Flo K Gill |
| 5 | Sheeza Doozee S Bowman |
| 6 | Just Us B Francis |
| 7 | Blue Sequin B Francis |
| 8 | Markaboy's Girl J Edwards |
| 9 | Wild Mouse (Res) S Fredricks |

9th Race 10.23p.m.

| 4th & 5th Grade, 431m | |
|-----------------------|------------------------------|
| 1 | Ballroom Star B Hildred |
| 2 | Ginger Moss E Smith |
| 3 | Tantalus G Draheim |
| 4 | Johnny Bruce G Kennedy |
| 5 | Tender Blondie O Sweeney |
| 6 | Woogaroo Silk M Ross |
| 7 | Riviera Lass A Perry |
| 8 | Duke's Treasure B Edwards |
| 9 | New Plan (Res) J Edwards |
| 10 | Dungarvan Lad (Res) J Curran |

10th Race 10.46p.m.

| 4th and 5th Grade, 512m | |
|-------------------------|----------------------------|
| 1 | Kenya Catch Me J Rodger |
| 2 | Koorleah Rocket C Perry |
| 3 | Felicitacion C Smith |
| 4 | Night Vision B Bolin |
| 5 | Mighty Nancy L Waldon |
| 6 | Doongara Kid G Draheim |
| 7 | Smart Ghost R Krause |
| 8 | Early Mark W Dunsmore |
| 9 | Machine Megs (Res) W Green |
| 10 | Just Heidi (Res) S Lewis |

Stewards



Report

21.4.93

WEATHER Clear and cool. **TRACK** Good.

SCRATCHINGS BANKA which was scratched for veterinary reasons was declared ineligible to start for ten days. THE ABSOLUTE NZ, CAESARS HALO and LASER GUN were scratched for acceptable reasons.

GEAR CHANGES CHOKIN NZ remove lug pole. LAND OF GIANTS remove Mk.5 sulky. JUNGLE GEORGE remove Mk.5 sulky. LOW RANGE add Mk.5 sulky.

MATTER ADJOURNED FROM RACE 6 ON 17 APRIL 1993 — Following a report from the swabbing officials regarding the attitude of trainer S. Harney, Mr. Harney was interviewed by the Chief Steward on Tuesday, 20th April. After hearing Mr. Harney's explanation it appeared that he was confused with the procedures adopted in Queensland compared to those in other States and he was of the opinion that any friction was as a result of his misunderstanding of the procedures. He advised that he is now aware of the procedures and will be happy to conform with them.

RACE ONE Warnings were issued to the connections of AUSSIE VAN (D. Holbeck) and JALVA BOY NZ (M. Donovan) which were back from the barrier as the start was effected. Time: 2:40.5. Mile Rate: 2:03.0. Sectional Times: 37.7, 32.6, 31.2, 29.8, 29.2.

RACE TWO Approaching the turn into the front straight during the first lap SUNASALINA (T. Holbeck) galloped as a result of a minor reduction in the pace. No blame could be attributed to any particular horse or driver. L. Fullarton (WOODY DO) was reprimanded regarding his use of the whip over the concluding stages when it appeared obvious that his horse's run had finished. Time: 2:39.7. Mile Rate: 2:02.3. Sectional Times: 35.8, 30.7, 32.4, 30.9, 29.9.

RACE THREE G. Franklin (SLIDE RULE) was reprimanded for endeavouring to take up a position where there was insufficient room to do so approaching the turn into the front straight during the first lap. As a result of that incident BRANSTON (M. Lichtwark) and LOW RANGE (M. Donovan) were inconvenienced. A warning was issued to the connections of JUNES BABE (G. Dixon) which shifted out considerably in the run to the finish. Time: 2:39.3. Mile Rate: 2:02.0. Sectional Times: 36.8, 31.6, 31.2, 29.6, 30.1.

RACE FOUR It was noted that KAPPADALE (I. McMahon) was held up for a clear run at a vital stage in the run to the finish and when clear approaching the finish, finished well. Time: 2:39.9. Mile Rate: 2:02.5. Sectional Times: 36.4, 32.7, 31.1, 29.3, 30.4.

RACE FIVE A false start was declared when a number of horses were inconvenienced in the score up and approaching the starting area horses had not been able to fully occupy their allotted positions. All horses retained their allotted positions for the next score up and that score up was called off when FRANCO GLEN (D. Aiken) galloped in the latter stages of the score up causing CLASSIC ALBA NZ (A. Donohoe) to be checked. FRANCO GLEN was sent to the outside of the line by the starter and will be drawn wide in mobile start races until the Stewards are satisfied it will perform in the desired manner. It was noted that WEONA WARRIOR (B. Hancock) and DEFOE (T. Demmler) were unable to obtain clear runs over the concluding stages. Time/Mile Rate: 1:54.6. Sectional Times: 27.1, 30.7, 28.5, 28.3.

RACE SIX It was noted that BOWRAL BOY NZ (T. Demmler) was inconvenienced on the turn out of the back straight during the first lap as the pace slowed marginally. JOHN OWEN (G. Stampalia) cross-fired approaching the finish. The veterinary surgeon reported that the horse sustained a minor laceration to the off foreleg. In the opinion of the veterinary surgeon the horse should be fit to take its place in the field on Saturday night. However, a veterinary inspection of the horse will be required on Saturday night before the horse is passed fit to race. R. Chambers (JACK MORRIS NZ) was questioned regarding the manner in which the horse appeared to race in the back straight during the final lap when it appeared to take some time for the horse to gain momentum and move up towards the leaders. Mr. Chambers explained that

it was his intention to commence a run at approximately the 800 metre mark. However, as a result of what he believed was the uncertainty of the driver of DARK PAUL (A. Peace), that is whether or not he was going to commence a run at about that time, Mr. Chambers elected to not make a move rather than move at that time and be forced particularly wide in the back straight still some distance from the finish. He eventually commenced to make a fast forward move approximately 400 metres from the finish. However, on pulling the horse out to make the move the horse paced ungenerously for a couple of strides resulting in it being somewhat slow in reaching top speed. It was noted that the horse, even after racing wide on the turn into the front straight in the final lap, finished very quickly to be beaten a short margin. His explanation was noted. Subsequent to the initial advice received from the veterinary surgeon of his inspection of JOHN OWEN, the veterinary surgeon advised that he again inspected the horse and found the horse to be also suffering from tendon problems in both forelegs. Time/Mile Rate: 1:56.1. Sectional Times: 28.2, 30.9, 28.6, 28.4.

RACE SEVEN It was noted that CAPTAIN LEE NZ (J. Stormont) raced three wide mostly without cover for almost the entire distance. Time/Mile Rate: 1:57.5. Sectional Times: 28.0, 32.2, 29.4, 27.9.

RACE EIGHT PARAGON PETE (C. McKinnis), LORD CARRINGTON (R. Gon-Chee), CANNY BERRY NZ (G. Bowyer) and FAIR DINKUM (E. Papworth) were back from the barrier as the start was effected. R. Gon-Chee and G. Bowyer were both fined \$50 for failing to come up into position at the start. Rule 221(g). C. McKinnis and E. Papworth will be interviewed regarding the matter on Saturday, 24th April, 1993. WIG AND GOWN (K. Belford) was checked on the turn out of the front straight after the start when racing on the inside of ATOMIC VIEW (I. McMahon) which was crossing ahead of WIG AND GOWN. I. McMahon was found guilty of causing a tightening and his drivers licence was suspended for three weeks. Rule 263(b). Following a report of an altercation between K. Belford and I. McMahon, an inquiry was opened and after taking some evidence from K. Belford and I. McMahon, the inquiry was adjourned to a date to be fixed. Time: 2:35.3. Mile Rate: 1:59.0. Sectional Times: 35.0, 31.2, 31.2, 29.0, 28.9.

RACE NINE JUST NUDGE (K. Schulz) which galloped at the start causing STYLISH BYE (S. McCall) to be checked and which galloped in the back straight during the final lap will be drawn wide in mobile start races for a minimum of two race starts and was declared ineligible to start at Albion Park until the Stewards are satisfied it will perform in the desired manner. Time/Mile Rate: 1:59.8. Sectional Times: 28.6, 30.8, 31.0, 29.4.

RACE TEN JAMIE MALANEY NZ (J. Newberry) which galloped at the start losing considerable ground will be drawn wide in mobile start races for a minimum of two race starts. A warning was issued to the connections of CAZNA (N. Scott) which lugged in sharply approaching the finish causing GOLDEN SOVEREIGN (R. Martin) to be checked. Time: 2:36.8. Mile Rate: 2:00.1. Sectional Times: 34.9, 30.1, 31.2, 30.0, 30.6.

PRE-RACE SWABBING — Samples taken from 70 horses were tested for TOC2 levels. All samples were cleared.

POST RACE SWABBING — R1: 1st, 2nd, 3rd. R2: 1st, 2nd, 3rd. R3: 1st, 2nd, 3rd. R4: 1st, 2nd, 3rd. R5: 1st, 2nd, 3rd, 4th. R6: 1st, 2nd, 3rd, 4th. R7: 1st, 2nd, 3rd, 4th, 9th. R8: 1st, 2nd. R9: 1st. R10: 1st.

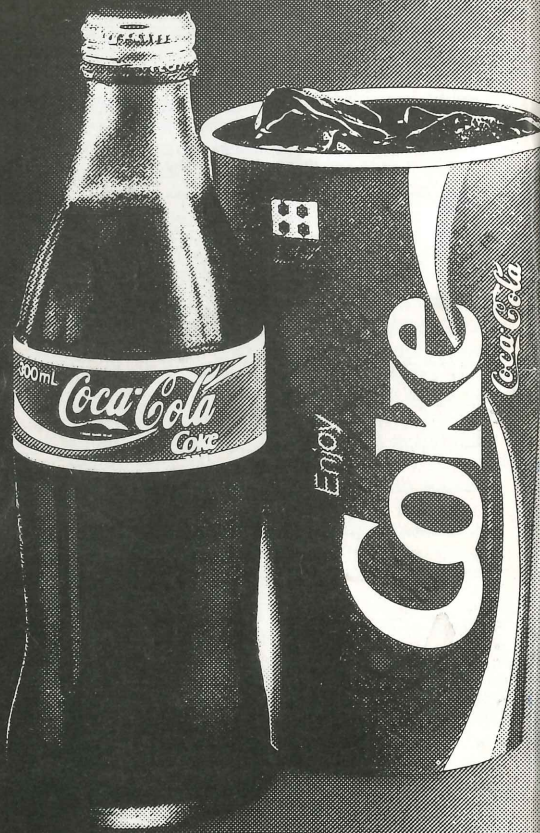
Trainers S. Cini (LADY ATALANTA), M. Donovan (JALVA BOY NZ), S. Hunter (FINE TIME), R. Majewski (LOCO FLYER), D. Rodger (WOODY DO), W. Dixon (TOP GUN NZ), K. Brooks (VANASSIC), M. Lichtwark (BRANSTON), D. Royle (MIKES TRICK) were reprimanded for failing to have the horses on course within the prescribed time. CLIONA LANDING was late arriving at the course due to a transport breakdown. On receiving advice from trainer G. Lefoe that LASER GUN would be very late arriving on the course, the horse was withdrawn on the order of the Stewards as it would have been too late for the horse to be subjected to TOC2 testing.



SETTLING

| PAY | NAME | RECEIVE |
|-----|----------------------------------|---------|
| 45 | JACK MORRIS | |
| 44 | | |
| 43 | | |
| 42 | Master American | |
| 41 | | |
| 40 | Chris Vance - Westgate \$190,000 | |
| 39 | Blossom Lady 36x | |
| 38 | | |
| 37 | | |
| 36 | | |
| 35 | Frances Tiger | |
| 34 | | |
| 33 | | |
| 32 | Chastity | |
| 31 | Lefoe | |
| 30 | | |
| 29 | | |
| 28 | | |
| 27 | | |
| 26 | Kuatie Lord | |
| 25 | | |
| 24 | | |
| 23 | | |
| 22 | | |

FOR A CHAMPION THIRST



"COCA-COLA" AND "COKE" ARE REGISTERED TRADE MARKS WHICH IDENTIFY THE SAME PRODUCT OF THE COCA-COLA COMPANY. THE DYNAMIC RIBBON DEVICE IS ALSO A REGISTERED TRADE MARK OF THE COCA-COLA COMPANY.